

**Lactobacillus jensenii, Strain 208-1**

**Catalog No. HM-646**

**Product Description:** *Lactobacillus jensenii* (*L. jensenii*), strain 208-1 was isolated in 2007 from human vaginal mucosa.

**Lot<sup>1,2</sup>: 59884464**

**Manufacturing Date: 07MAR2012**

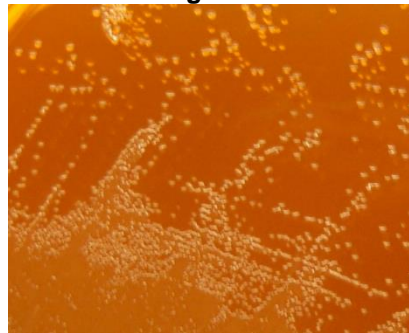
TEST	SPECIFICATIONS	RESULTS
<b>Phenotypic Analysis</b> Cellular morphology Colony morphology <sup>3</sup>	Report results Report results	Gram-positive rod Circular, entire, low convex, translucent and gray (Figure 1)
<b>Genotypic Analysis</b> Sequencing of 16S ribosomal RNA gene (~ 1330 bp)	≥ 99% identical to GenBank: ADEX01000013 ( <i>L. jensenii</i> , strain 208-1)	≥ 99% identical to GenBank: ADEX01000013 ( <i>L. jensenii</i> , strain 208-1)
<b>Viability (post-freeze)<sup>3</sup></b>	Growth	Growth

<sup>1</sup>Quality control of HMP material is only performed to demonstrate that the material distributed by BEI Resources is identical to the deposited material. It should not be considered a complete characterization of the deposited organism.

<sup>2</sup>*L. jensenii*, strain 208-1 was deposited by Dr. Yang Liu, Ph.D., Senior Scientist & Group Leader, Osel Inc., Santa Clara, California. The deposited material was inoculated into Lactobacilli MRS Broth and incubated for 24 hours at 37°C in an anaerobic atmosphere (80% N<sub>2</sub>:10% CO<sub>2</sub>:10% H<sub>2</sub>). The material from the initial growth was passaged once in Lactobacilli MRS Broth for 24 hours at 37°C in an anaerobic atmosphere to produce this lot.

<sup>3</sup>24 hours at 37°C in an anaerobic atmosphere on Lactobacilli MRS Agar

**Figure 1**



**Date:** 19 JUN 2012

**Signature:** 

**Title:** Technical Manager, BEI Authentication or designee

ATCC®, on behalf of BEI Resources, hereby represents and warrants that the material provided under this certificate has been subjected to the tests and procedures specified and that the results described, along with any other data provided in this certificate, are true and accurate to the best of ATCC®'s knowledge.

ATCC® is a trademark of the American Type Culture Collection. You are authorized to use this product for research use only. It is not intended for human use.

