

Genomic DNA from *Yersinia pestis*, Strain ZE94-2122

Catalog No. NR-2715

This reagent is the property of the U.S. Government.

Product Description: Genomic DNA was isolated from a preparation of *Yersinia pestis*, strain ZE94-2122.

Lot¹: 7398286

Manufacturing Date: 10MAR2006

| TEST | SPECIFICATIONS | RESULTS |
|---|---|---|
| Sequencing of 16S Ribosomal RNA Gene (~ 510 base pairs) | Consistent with <i>Yersinia pestis</i> Identical to GenBank AF282306 | Consistent with <i>Yersinia pestis</i> ² Identical to GenBank AF282306 |
| Presence of Plasmids Confirmed by PCR Amplification 110 kb plasmid 70 kb plasmid 9.5 kb plasmid | Confirmed Confirmed Confirmed | Confirmed Confirmed Confirmed |
| Agarose Gel Electrophoresis | High molecular weight chromosomal DNA | High molecular weight chromosomal DNA (Figure 1) |
| Concentration by PicoGreen[®] Measurement | 4 to 6 µg in 25 to 100 µL per vial | 4.4 µg in 43 µL per vial (103 µg/mL) |
| Functional Activity by PCR Amplification 16S ribosomal RNA gene Virulence markers on plasmids 110 kb plasmid 70 kb plasmid 9.5 kb plasmid | ~ 1500 bp amplicon ~ 1200 bp amplicon ~ 1900 bp amplicon ~ 400 bp amplicon | ~ 1500 bp amplicon ~ 1200 bp amplicon ~ 1900 bp amplicon ~ 400 bp amplicon |
| OD₂₆₀/OD₂₈₀ Ratio | 1.7 to 1.9 | 1.9 |
| Bacterial Inactivation 10% of total yield plated on agar; limit of detection is 0.3 colony-forming units per vial | No viable bacteria detected | No viable bacteria detected |

¹*Y. pestis*, strain ZE94-2122 was deposited by the Centers for Disease Control and Prevention, Division of Vector-Borne Infectious Diseases, Fort Collins, Colorado. The deposited material was prepared by culture of a single colony isolated from the CDC Reference Collection stock. The bacterial preparation used for extraction of genomic DNA was produced by propagation of the CDC deposited material (not NR-635 as the label suggests). Genomic DNA was extracted using proprietary technology.

²Also consistent other *Yersinia* species

Date: 24 MAY 2012

Signature:

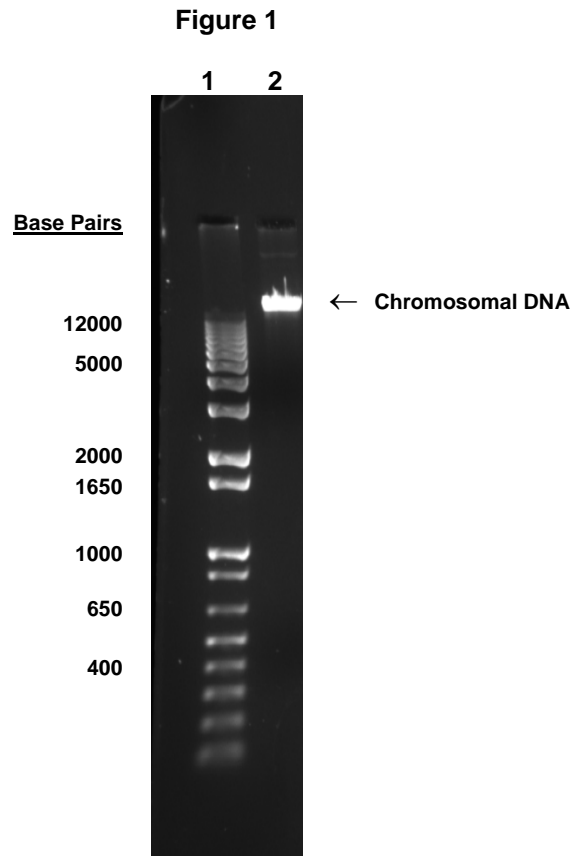


Title: Technical Manager, BEI Authentication or designee

ATCC[®], on behalf of BEI Resources, hereby represents and warrants that the material provided under this certificate has been subjected to the tests and procedures specified and that the results described, along with any other data provided in this certificate, are true and accurate to the best of ATCC[®]'s knowledge.

ATCC[®] is a trademark of the American Type Culture Collection.

You are authorized to use this product for research use only. It is not intended for human use.



Lane 1: Invitrogen™ TrackIt™ 1 Kb Plus DNA Ladder
Lane 2: 200 ng of NR-2715