

Genomic DNA from *Yersinia pestis*, Strain CO92

Catalog No. NR-2717

This reagent is the property of the U.S. Government.

Product Description: Genomic DNA was isolated from a preparation of *Yersinia pestis*, strain CO92.

Lot¹: 7398288

Manufacturing Date: 10MAR2006

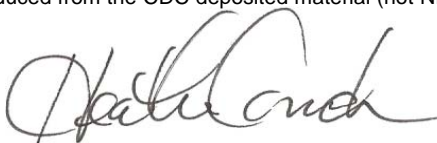
TEST	SPECIFICATIONS	RESULTS
Sequencing of 16S Ribosomal RNA Gene (~ 580 base pairs)	Identical to source organism Consistent with <i>Yersinia pestis</i> Identical to GenBank NC_003143	Identical to source organism Consistent with <i>Yersinia pestis</i> ² Identical to GenBank NC_003143
Presence of Plasmids Confirmed by PCR Amplification 110 kb plasmid 70 kb plasmid 9.5 kb plasmid	Confirmed Confirmed Confirmed	Confirmed Confirmed Confirmed
Agarose Gel Electrophoresis	High molecular weight chromosomal DNA	High molecular weight chromosomal DNA (Figure 1)
Concentration by PicoGreen[®] Measurement	4 to 6 µg in 25 to 100 µL per vial	4.0 µg in 31 µL per vial (130 µg/mL)
Functional Activity by PCR Amplification 16S ribosomal RNA gene Virulence markers on plasmids 110 kb plasmid 70 kb plasmid 9.5 kb plasmid	~ 1500 bp amplicon ~ 1200 bp amplicon ~ 1900 bp amplicon ~ 400 bp amplicon	~ 1500 bp amplicon ~ 1200 bp amplicon ~ 1900 bp amplicon ~ 400 bp amplicon
OD₂₆₀/OD₂₈₀ Ratio	1.7 to 1.9	1.9
Bacterial Inactivation 10% of total yield plated on agar; limit of detection is 0.2 colony-forming units per vial	No viable bacteria detected	No viable bacteria detected

¹*Y. pestis*, strain CO92 was deposited by the Centers for Disease Control and Prevention, Division of Vector-Borne Infectious Diseases, Fort Collins, Colorado. The deposited material was prepared by culture of a single colony isolated from the CDC Reference Collection stock. The bacterial preparation used for extraction of genomic DNA was produced from the CDC deposited material (not NR-641 as the label suggests). Genomic DNA was extracted using proprietary technology.

²Also consistent other *Yersinia* species

Date: 24 MAY 2012

Signature:



Title:

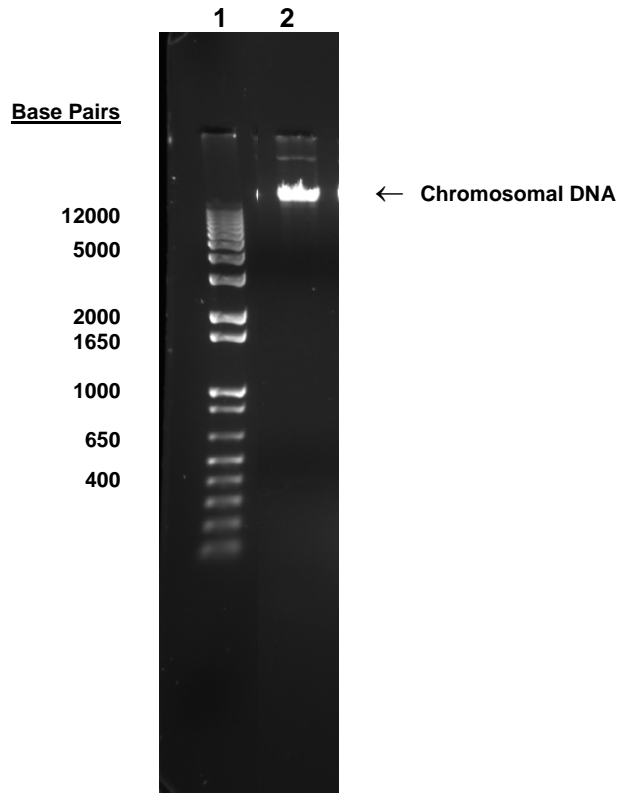
Technical Manager, BEI Authentication or designee

ATCC[®], on behalf of BEI Resources, hereby represents and warrants that the material provided under this certificate has been subjected to the tests and procedures specified and that the results described, along with any other data provided in this certificate, are true and accurate to the best of ATCC[®]'s knowledge.

ATCC[®] is a trademark of the American Type Culture Collection.

You are authorized to use this product for research use only. It is not intended for human use.

Figure 1



Lane 1: Invitrogen™ TrackIt™ 1 Kb Plus DNA Ladder
Lane 2: 200 ng of NR-2717