

Genomic DNA from *Yersinia pestis*, Strain Harbin 35

Catalog No. NR-2719

This reagent is the property of the U.S. Government.

Product Description: Genomic DNA was isolated from a preparation of *Yersinia pestis* (*Y. pestis*), strain Harbin 35.

Lot¹: 60093006

Manufacturing Date: 13JUL2011

TEST	SPECIFICATIONS	RESULTS
Sequencing of 16S Ribosomal RNA Gene (~ 1400 base pairs)	Consistent with <i>Y. pestis</i>	Consistent with <i>Y. pestis</i> ²
Presence of Plasmids Confirmed by PCR Amplification 110 kb (pMT1) plasmid 70 kb (pCD1) plasmid 9.5 kb (pPCP1) plasmid	Positive Positive Positive	Positive Positive Positive
Agarose Gel Electrophoresis	High molecular weight chromosomal DNA	High molecular weight chromosomal DNA (Figure 1)
Concentration by PicoGreen[®] Measurement	0.7 to 1.5 µg in 25 to 100 µL per vial	1 µg in 50 µL per vial (20 µg/mL)
Functional Activity by PCR Amplification 16S ribosomal RNA gene <i>Y. pestis</i> specific chromosomal region Virulence markers on plasmid 110 kb (pMT1) plasmid 70 kb (pCD1) plasmid 9.5 kb (pPCP1) plasmid	~ 1500 bp amplicon ~ 800 bp amplicon ~ 1200 bp amplicon ~ 1900 bp amplicon ~ 400 bp amplicon	~ 1500 bp amplicon ~ 800 bp amplicon ~ 1200 bp amplicon ~ 1900 bp amplicon ~ 400 bp amplicon
OD₂₆₀/OD₂₈₀ Ratio	1.7 to 2.0	1.9
Bacterial Inactivation 10% of total yield plated on agar ³	No viable bacteria detected	No viable bacteria detected

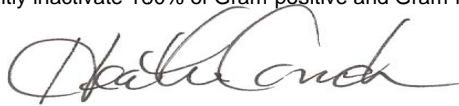
¹The bacterial preparation used for extraction of genomic DNA was produced from NR-639 (Lot: 4464629). Genomic DNA was extracted using proprietary technology.

²Also consistent *Yersinia pseudotuberculosis*

³An extraction procedure was used that has been shown to consistently inactivate 100% of Gram-positive and Gram-negative bacteria.

Date: 24 MAY 2012

Signature:



Title:

Technical Manager, BEI Authentication or designee

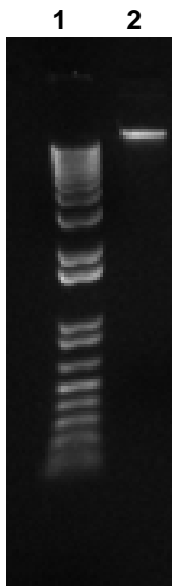
ATCC[®], on behalf of BEI Resources, hereby represents and warrants that the material provided under this certificate has been subjected to the tests and procedures specified and that the results described, along with any other data provided in this certificate, are true and accurate to the best of ATCC[®]'s knowledge.

ATCC[®] is a trademark of the American Type Culture Collection.

You are authorized to use this product for research use only. It is not intended for human use.



Figure 1



Lane 1: Invitrogen™ TrackIt™ 1 Kb Plus DNA Ladder
Lane 2: 200 ng of NR-2719