

Genomic DNA from *Yersinia pestis*, Strain Nepal516

Catalog No. NR-2720

This reagent is the property of the U.S. Government.

Product Description: Genomic DNA was isolated from a preparation of *Yersinia pestis*, strain Nepal516. The bacterial preparation was produced by propagation of BEI Resources NR-640.

Lot¹: 7398291

Manufacturing Date: 29SEP2006

TEST	SPECIFICATIONS	RESULTS
Sequencing of 16S Ribosomal RNA Gene (~ 500 bp)	Identical to BEI Resources NR-640 Consistent with <i>Yersinia pestis</i> Identical to GenBank CP000305	Identical to BEI Resources NR-640 Consistent with <i>Yersinia pestis</i> ² Identical to GenBank CP000305
Presence of Plasmids Confirmed by PCR Amplification 110 kb plasmid 70 kb plasmid 9.5 kb plasmid	Confirmed Confirmed Confirmed	Confirmed Confirmed Confirmed
Agarose Gel Electrophoresis	High molecular weight chromosomal DNA	High molecular weight chromosomal DNA (Figure 1)
Concentration by PicoGreen[®] Measurement	4 to 6 µg in 25 to 100 µL per vial	6.4 µg in 52 µL per vial (125 µg/mL)
Functional Activity by PCR Amplification 16S ribosomal RNA gene Virulence markers on plasmids 110 kb plasmid 70 kb plasmid 9.5 kb plasmid	~ 1500 bp amplicon ~ 1200 bp amplicon ~ 1900 bp amplicon ~ 400 bp amplicon	~ 1500 bp amplicon ~ 1200 bp amplicon ~ 1900 bp amplicon ~ 400 bp amplicon
OD₂₆₀/OD₂₈₀ Ratio	1.7 to 1.9	1.9
Bacterial Inactivation 10% of total yield plated on agar ³	No viable bacteria detected	No viable bacteria detected

¹The bacterial preparation used for extraction of genomic DNA was produced from BEI Resources NR-640 (Lot 4464634). Genomic DNA was extracted using proprietary technology.

²Also consistent with other *Yersinia* species

³An extraction procedure was used that has been shown to consistently inactivate 100% of Gram negative bacteria.

Date: 24 MAY 2012

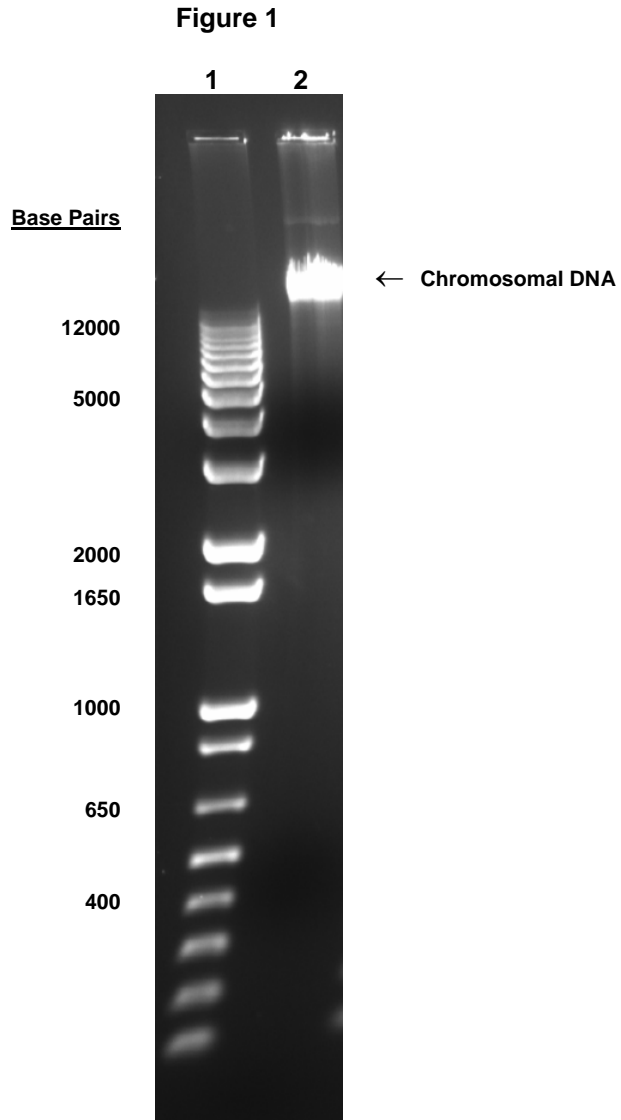
Signature: 

Title: Technical Manager, BEI Authentication or designee

ATCC[®], on behalf of BEI Resources, hereby represents and warrants that the material provided under this certificate has been subjected to the tests and procedures specified and that the results described, along with any other data provided in this certificate, are true and accurate to the best of ATCC[®]'s knowledge.

ATCC[®] is a trademark of the American Type Culture Collection.

You are authorized to use this product for research use only. It is not intended for human use.



Lane 1: Invitrogen™ TrackIt™ 1 Kb Plus DNA Ladder
Lane 2: 200 ng of NR-2720