

Genomic DNA from *Burkholderia pseudomallei*, Strain 1710a

Catalog No. NR-8218

Product Description: Genomic DNA was isolated from a preparation of *Burkholderia pseudomallei* (*B. pseudomallei*), strain 1710a.

Lot¹: 57983828

Manufacturing Date: 29FEB2008

TEST	SPECIFICATIONS	RESULTS
Sequencing of 16S Ribosomal RNA Gene (~ 1380 base pairs)	Identical to <i>B. pseudomallei</i> , strain 1710b (GenBank: CP000125.1 and CP000124.1) ² Consistent with <i>B. pseudomallei</i>	Identical to <i>B. pseudomallei</i> , strain 1710b (GenBank: CP000125.1 and CP000124.1) ² Consistent with <i>B. pseudomallei</i> ³
Agarose Gel Electrophoresis	High molecular weight chromosomal DNA	High molecular weight chromosomal DNA (Figure 1)
Concentration by PicoGreen[®] Measurement	4 to 6 µg in 25 to 100 µL per vial	5.3 µg in 57 µL per vial (93 µg/mL)
Functional Activity by PCR Amplification 16S ribosomal RNA gene	~ 1500 bp amplicon	~ 1500 bp amplicon
OD₂₆₀/OD₂₈₀ Ratio	1.7 to 1.9	1.9
Bacterial Inactivation 10% of total yield plated on agar ⁴	No viable bacteria detected	No viable bacteria detected

¹*B. pseudomallei*, strain 1710a was deposited by Dr. Herbert P. Schweizer of the Department of Microbiology, Immunology and Pathology, College of Veterinary Medicine and Biomedical Sciences, Colorado State University, Fort Collins, Colorado. The bacterial preparation used for extraction of genomic DNA was produced from the deposited material. Genomic DNA was extracted using proprietary technology.

²*B. pseudomallei*, strain 1710b was isolated from the same patient as strain 1710a (<http://pathema.tigr.org/tigr-scripts/Burkholderia/shared/HtmlPage.cgi?page=strains>).

³Also consistent with *Burkholderia mallei*

⁴An extraction procedure was used that has been shown to consistently inactivate 100% of Gram-negative bacteria.

Date: 24 MAY 2012

Signature:



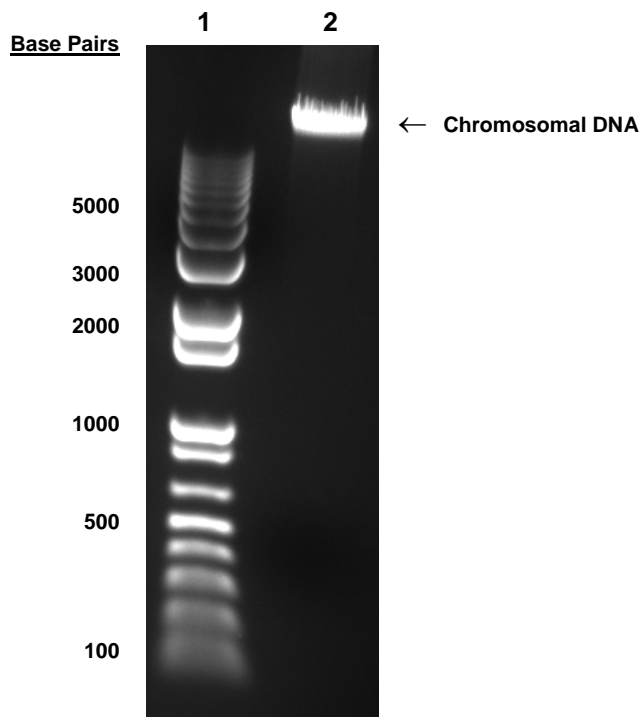
Title: Technical Manager, BEI Authentication or designee

ATCC[®], on behalf of BEI Resources, hereby represents and warrants that the material provided under this certificate has been subjected to the tests and procedures specified and that the results described, along with any other data provided in this certificate, are true and accurate to the best of ATCC[®]'s knowledge.

ATCC[®] is a trademark of the American Type Culture Collection.

You are authorized to use this product for research use only. It is not intended for human use.

Figure 1



Lane 1: Invitrogen™ TrackIt™ 1 Kb Plus DNA Ladder
Lane 2: 200 ng of NR-8218