

***Lachnospiraceae*, Strain 6\_1\_63FAA**

**Catalog No. HM-150**

**Product Description:** *Lachnospiraceae*, strain 6\_1\_63FAA was obtained from a healthy biopsy sample taken from the ascending colon of a 51-year-old female patient with remittent Crohn's disease.

**Lot<sup>1,2</sup>: 60836072**

**Manufacturing Date: 29MAR2012**

TEST	SPECIFICATIONS	RESULTS
<b>Phenotypic Analysis</b> Cellular morphology <sup>3</sup> Colony morphology <sup>4</sup>	Report results Report results	Gram-variable rods Circular, entire, convex and light gray (Figure 1)
<b>Genotypic Analysis</b> Sequencing of 16S ribosomal RNA gene (1440 base pairs)	≥ 99% identical to GenBank: ACTV01000014 ( <i>Lachnospiraceae</i> , strain 6_1_63FAA)	≥ 99% identical to GenBank: ACTV01000014 ( <i>Lachnospiraceae</i> , strain 6_1_63FAA)
<b>Viability (post-freeze)<sup>4</sup></b>	Growth	Growth

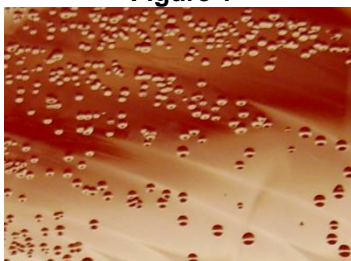
<sup>1</sup>Quality control of HMP material is only performed to demonstrate that the material distributed by BEI Resources is identical to the deposited material. It should not be considered a complete characterization of the deposited organism.

<sup>2</sup>*L. bacterium*, strain 6\_1\_63FAA was deposited by Professor Emma Allen-Vercoe, Department of Molecular and Cellular Biology, University of Guelph, Guelph, Ontario, Canada. The deposited material was inoculated into Trypticase-Yeast Extract (TY) broth and incubated for 72 hours at 37°C and anaerobic atmosphere (80% N<sub>2</sub>:10% CO<sub>2</sub>:10% H<sub>2</sub>). The material from the initial growth was passaged once in TY broth for 72 hours at 37°C and anaerobic atmosphere to produce this lot.

<sup>3</sup>*Lachnospiraceae* species have a Gram-positive cell wall but several stain Gram-variable; see Rainey, F. A. "Family V. *Lachnospiraceae* fam. nov." In *Bergey's Manual of Systematic Bacteriology, Volume 3*. 2<sup>nd</sup> Ed. New York: Springer, 2009, p. 921.

<sup>4</sup>48 hours at 37°C and anaerobic atmosphere on Tryptic Soy Agar with 5% defibrinated sheep blood

**Figure 1**



**Date:** 09 JUL 2012

**Signature:** 

**Title:** Technical Manager, BEI Authentication or designee

ATCC®, on behalf of BEI Resources, hereby represents and warrants that the material provided under this certificate has been subjected to the tests and procedures specified and that the results described, along with any other data provided in this certificate, are true and accurate to the best of ATCC®'s knowledge.

ATCC® is a trademark of the American Type Culture Collection. You are authorized to use this product for research use only. It is not intended for human use.

