

***Finegoldia magna*, Strain SY01**

Catalog No. HM-293

Product Description: *Finegoldia magna* (*F. magna*), strain SY01 (also referred to as strain SY403409CC001050417) was isolated on September 10, 2009 from the vagina of a bacterial vaginosis patient in Urbana, Illinois.

Lot^{1,2}: 59994671

Manufacturing Date: 03AUG2011

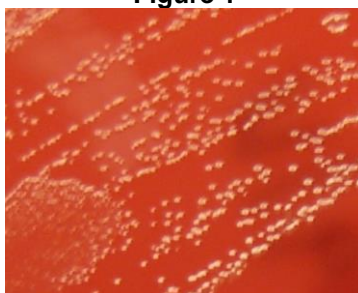
TEST	SPECIFICATIONS	RESULTS
Phenotypic Analysis Cellular morphology Colony morphology ³	Report results Report results	Gram-positive cocci Circular, convex, entire and light gray (Figure 1)
Genotypic Analysis Sequencing of 16S ribosomal RNA gene (~ 1380 base pairs)	≥ 99% identical to GenBank: AFUI01000011 (<i>F. magna</i> , strain SY403409CC001050417)	≥ 99% identical to GenBank: AFUI01000011 (<i>F. magna</i> , strain SY403409CC001050417)
Viability (post-freeze)³	Growth	Growth

¹Quality control of HMP material is only performed to demonstrate that the material distributed by BEI Resources is identical to the deposited material. It should not be considered a complete characterization of the deposited organism.

²*F. magna*, strain SY01 was deposited by Professor Brenda Anne Wilson, Ph.D., Department of Microbiology, Institute for Genomic Biology, University of Illinois at Urbana-Champaign, Urbana, Illinois, USA. HM-293 was produced by inoculation of the deposited material into Modified Chopped Meat Medium (ATCC medium 1490) and incubated for 72 hours at 37°C in an anaerobic atmosphere. The material from the initial growth was passaged once in Modified Chopped Meat Medium for 48 hours at 37°C in an anaerobic atmosphere to produce this lot.

³72 hours at 37°C in an anaerobic atmosphere (80% N₂:10% CO₂:10% H₂) on Tryptic Soy agar with 5% defibrinated sheep blood

Figure 1



Date: 16 JUL 2012

Signature:

Title: Technical Manager, BEI Authentication or designee

ATCC®, on behalf of BEI Resources, hereby represents and warrants that the material provided under this certificate has been subjected to the tests and procedures specified and that the results described, along with any other data provided in this certificate, are true and accurate to the best of ATCC®'s knowledge.

ATCC® is a trademark of the American Type Culture Collection.

You are authorized to use this product for research use only. It is not intended for human use.

