

***Pseudomonas* sp., Strain 2\_1\_26**

**Catalog No. HM-214**

**Product Description:** *Pseudomonas* sp., strain 2\_1\_26 was isolated from healthy biopsy tissue taken from the rectum of a 59-year-old male.

**Lot<sup>1,2</sup>: 59867272**

**Manufacturing Date: 29APR2011**

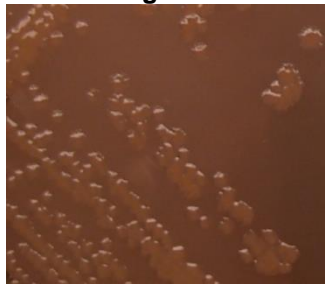
TEST	SPECIFICATIONS	RESULTS
<b>Phenotypic Analysis</b> Cellular morphology Colony morphology <sup>3</sup>	Report results Report results	Gram-negative rod Irregular, flat, undulate, glossy and green (Figure 1)
<b>Genotypic Analysis</b> Sequencing of 16S ribosomal RNA gene (~ 1400 base pairs)	≥ 99% identical to GenBank: ACWU01000257 ( <i>Pseudomonas</i> sp., strain 2_1_26)	≥ 99% identical to GenBank: ACWU01000257 ( <i>Pseudomonas</i> sp., strain 2_1_26)
<b>Viability (post-freeze)<sup>3</sup></b>	Growth	Growth

<sup>1</sup>Quality control of HMP material is only performed to demonstrate that the material distributed by BEI Resources is identical to the deposited material. It should not be considered a complete characterization of the deposited organism.

<sup>2</sup>*Pseudomonas* sp., strain 2\_1\_26 was deposited by Professor Emma Allen-Vercoe, Department of Molecular and Cellular Biology, University of Guelph, Guelph, Ontario, Canada. The deposited material was inoculated into Tryptic Soy Broth and incubated for 24 hours at 37°C in an aerobic atmosphere. Broth inoculum was added to Kolles which were grown 24 hours at 37°C to produce this lot.

<sup>3</sup>24 hours at 37°C in an aerobic atmosphere on Tryptic Soy Agar

**Figure 1**



**Date:** 17 JUL 2012

**Signature:**

**Title:** Technical Manager, BEI Authentication or designee

ATCC®, on behalf of BEI Resources, hereby represents and warrants that the material provided under this certificate has been subjected to the tests and procedures specified and that the results described, along with any other data provided in this certificate, are true and accurate to the best of ATCC®'s knowledge.

ATCC® is a trademark of the American Type Culture Collection.

You are authorized to use this product for research use only. It is not intended for human use.

