

Acidaminococcus sp., Strain D21

Catalog No. HM-81

Product Description: *Acidaminococcus* sp., strain D21 was isolated in 2007 from a healthy biopsy specimen taken from the descending colon of a 55-year-old female patient with remittent Crohn's disease in Calgary, Alberta, Canada.

Lot^{1,2}: 60318291

Manufacturing Date: 04NOV2011

TEST	SPECIFICATIONS	RESULTS
Phenotypic Analysis Cellular morphology Colony morphology ³	Report results Report results	Gram-negative cocci Circular, low convex, entire and translucent (Figure 1)
Genotypic Analysis Sequencing of 16S ribosomal RNA gene (~ 1470 base pairs)	≥ 99% identical to GenBank: ACGB01000072 (<i>Acidaminococcus</i> sp., strain D21)	≥ 99% identical to GenBank: ACGB01000072 (<i>Acidaminococcus</i> sp., strain D21)
Viability (post-freeze)⁴	Growth	Growth

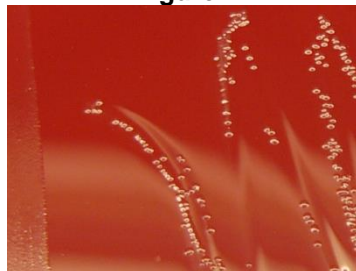
¹Quality control of HMP material is only performed to demonstrate that the material distributed by BEI Resources is identical to the deposited material. It should not be considered a complete characterization of the deposited organism.

²*Acidaminococcus* sp., strain D21 (also referred to as strain 2_2_8) was deposited by Professor Emma Allen-Vercoe, Department of Molecular and Cellular Biology, University of Guelph, Guelph, Ontario, Canada. The deposited material was inoculated into Modified Chopped Meat Medium (ATCC medium 1490) and incubated for 72 hours at 37°C and anaerobic atmosphere (80% N₂:10% CO₂:10% H₂). The material from the initial growth was passaged twice in Modified Chopped Meat Medium for 48 hours at 37°C and anaerobic atmosphere to produce this lot.

³72 hours at 37°C in an anaerobic atmosphere on Tryptic Soy Agar with 5% sheep blood

⁴48 hours at 37°C in an anaerobic atmosphere on Tryptic Soy Agar with 5% sheep blood

Figure 1



Date: 24 JUL 2012

Signature:

Title:

Technical Manager, BEI Authentication or designee

ATCC®, on behalf of BEI Resources, hereby represents and warrants that the material provided under this certificate has been subjected to the tests and procedures specified and that the results described, along with any other data provided in this certificate, are true and accurate to the best of ATCC®'s knowledge.

ATCC® is a trademark of the American Type Culture Collection.

You are authorized to use this product for research use only. It is not intended for human use.

