

***Clostridium difficile*, Strain 050-P50-2011**

Catalog No. HM-747

Product Description: *Clostridium difficile* (*C. difficile*), strain 050-P50-2011 was isolated in January 2011 from the stool of a patient with diarrhea.

Lot^{1,2}: 60539261

Manufacturing Date: 08MAR2012

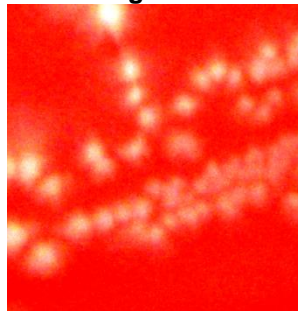
TEST	SPECIFICATIONS	RESULTS
Phenotypic Analysis Cellular morphology Colony morphology ³	Report results Report results	Gram-positive rod Irregular, flat, gray and opaque (Figure 1)
Genotypic Analysis Sequencing of 16S ribosomal RNA gene (~ 1440 bp)	≥ 99% identical to GenBank: AGAB01000012 (<i>C. difficile</i> , strain 050-P50-2011)	≥ 99% identical to GenBank: AGAB01000012 (<i>C. difficile</i> , strain 050-P50-2011)
Viability (post-freeze)³	Growth	Growth

¹Quality control of HMP material is only performed to demonstrate that the material distributed by BEI Resources is identical to the deposited material. It should not be considered a complete characterization of the deposited organism.

²*C. difficile*, strain 050-P50-2011 was deposited by Linda D. Bobo, M.D., Ph.D., Department of Infectious Diseases, Washington University of Medicine, St. Louis, Missouri. The deposited material was inoculated into Modified Reinforced Clostridial Broth (ATCC medium 2107) and incubated for 24 hours at 37°C in an anaerobic atmosphere (80% N₂:10% CO₂:10% H₂). The material from the initial growth was passaged once in Modified Reinforced Clostridial Broth for 24 hours at 37°C in an anaerobic atmosphere to produce this lot.

³48 hours at 37°C and anaerobic atmosphere on Tryptic Soy Agar with 5% defibrinated sheep blood

Figure 1



Date: 23 JUL 2012

Signature:

Title: Technical Manager, BEI Authentication or designee

ATCC®, on behalf of BEI Resources, hereby represents and warrants that the material provided under this certificate has been subjected to the tests and procedures specified and that the results described, along with any other data provided in this certificate, are true and accurate to the best of ATCC®'s knowledge.

ATCC® is a trademark of the American Type Culture Collection.

You are authorized to use this product for research use only. It is not intended for human use.

