

***Clostridium clostridioforme*, Strain 2\_1\_49FAA**

**Catalog No. HM-306**

**Product Description:** *Clostridium clostridioforme* (*C. clostridioforme*), strain 2\_1\_49FAA was isolated from inflamed biopsy tissue taken from the cecum of a 28-year-old male patient with ulcerative colitis.

**Lot<sup>1,2</sup>: 60486675**

**Manufacturing Date: 01DEC2011**

TEST	SPECIFICATIONS	RESULTS
<b>Phenotypic Analysis</b> Cellular morphology <sup>3</sup> Colony morphologies <sup>4,5</sup>	Report results Report results	Gram-positive rod Colony type 1: Circular, slightly peaked, entire, gray and smooth (Figure 1) Colony type 2: Circular, flat and gray (Figure 1)
<b>Genotypic Analysis</b> Sequencing of 16S ribosomal RNA gene (1400 base pairs)	≥ 99% identical to GenBank: ADLL01000101 ( <i>C. clostridioforme</i> , strain 2_1_49FAA)	≥ 99% identical to GenBank: ADLL01000101 ( <i>C. clostridioforme</i> , strain 2_1_49FAA)
<b>Viability (post-freeze)<sup>4</sup></b>	Growth	Growth

<sup>1</sup>Quality control of HMP material is only performed to demonstrate that the material distributed by BEI Resources is identical to the deposited material. It should not be considered a complete characterization of the deposited organism.

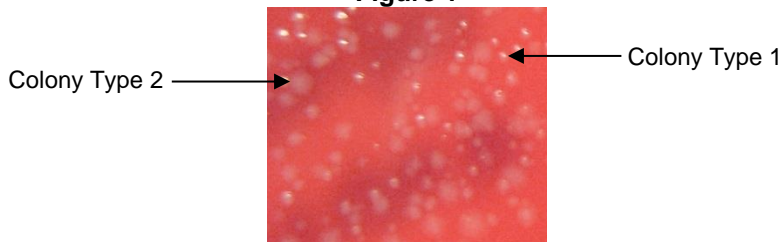
<sup>2</sup>*C. clostridioforme*, strain 2\_1\_49FAA was deposited by Emma Allen-Vercoe, Department of Molecular and Cellular Biology, University of Guelph, Guelph, Ontario, Canada. The deposited material was inoculated into Modified Reinforced Clostridial Broth (ATCC medium 2107) and incubated for 24 hours at 37°C and anaerobic atmosphere (80% N<sub>2</sub>:10% CO<sub>2</sub>:10% H<sub>2</sub>). The material from the initial growth was passaged once in Modified Reinforced Clostridial Broth for 24 hours at 37°C and anaerobic atmosphere to produce this lot.

<sup>3</sup>In Clostridial cultures, a decrease in peptidoglycan thickness occurs during growth, thus aged cultures may stain Gram-negative or Gram-variable (Beveridge, T. J. "Mechanism of Gram Variability in Select Bacteria." *J. Bacteriol.* 172 (1990): 1609-1620. PubMed: 1689718).

<sup>4</sup>48 hours at 37°C and anaerobic atmosphere on Tryptic Soy Agar with 5% defibrinated sheep blood

<sup>5</sup>Two colony types were observed. Plating of the individual colony types showed that they revert back to the mixed colony type. The 16S ribosomal RNA gene of each colony type was sequenced and found to be consistent with the other colony type and *C. clostridioforme*.

**Figure 1**



**Date:** 06 AUG 2012

**Signature:**

**Title:** Technical Manager, BEI Authentication or designee

ATCC®, on behalf of BEI Resources, hereby represents and warrants that the material provided under this certificate has been subjected to the tests and procedures specified and that the results described, along with any other data provided in this certificate, are true and accurate to the best of ATCC®'s knowledge.

ATCC® is a trademark of the American Type Culture Collection.

You are authorized to use this product for research use only. It is not intended for human use.

