

# Certificate of Analysis for HM-370D

**Genomic DNA from *Lactobacillus crispatus*, Strain EX849587VC01**

**Catalog No. HM-370D**

**Product Description:** Genomic DNA was obtained from a preparation of *Lactobacillus crispatus* (*L. crispatus*), strain EX849587VC01.

**Lot<sup>1,2</sup>: 60609322**

**Manufacturing Date: 17JAN2012**

TEST	SPECIFICATIONS	RESULTS
<b>Sequencing of 16S Ribosomal RNA Gene</b> (~ 1500 base pairs) <sup>3</sup>	Consistent with <i>L. crispatus</i>	Consistent with <i>L. crispatus</i>
<b>Agarose Gel Electrophoresis</b>	High molecular weight chromosomal DNA	High molecular weight chromosomal DNA (Figure 1)
<b>Concentration by PicoGreen<sup>®</sup> Measurement</b>	0.7 to 1.5 µg in 25 to 100 µL per vial	0.8 µg in 91 µL per vial (9 µg/mL)
<b>Functional Activity by PCR Amplification</b> 16S ribosomal RNA gene	~ 1500 bp amplicon	~ 1500 bp amplicon
<b>OD<sub>260</sub>/OD<sub>280</sub> Ratio</b>	1.7 to 2.0	1.9
<b>Bacterial Inactivation</b> 10% of total yield plated on Tryptic Soy Agar with 5% defibrinated sheep blood <sup>4,5</sup>	No viable bacteria detected	No viable bacteria detected

<sup>1</sup>Quality control of HMP organisms used for DNA extraction is only performed to demonstrate that the material produced by BEI Resources is identical to the deposited material. It should not be considered a complete characterization of the deposited organism.

<sup>2</sup>The bacterial preparation used for extraction of genomic DNA was produced by culture of BEI Resources HM-370 (Lot 59852015). Genomic DNA was extracted using proprietary technology.

<sup>3</sup>The sequence obtained for HM-370D could only be compared with published sequences. No 16S sequence was provided by the depositor, therefore, a direct comparison could not be performed.

<sup>4</sup>7 days at 37°C in an aerobic atmosphere with 5% CO<sub>2</sub>

<sup>5</sup>An extraction procedure was used that has been shown to consistently inactivate 100% of Gram-positive and Gram-negative bacteria.

**Date:** 10 AUG 2012

**Signature:**



**Title:**

Technical Manager, BEI Authentication or designee

ATCC<sup>®</sup>, on behalf of BEI Resources, hereby represents and warrants that the material provided under this certificate has been subjected to the tests and procedures specified and that the results described, along with any other data provided in this certificate, are true and accurate to the best of ATCC<sup>®</sup>'s knowledge.

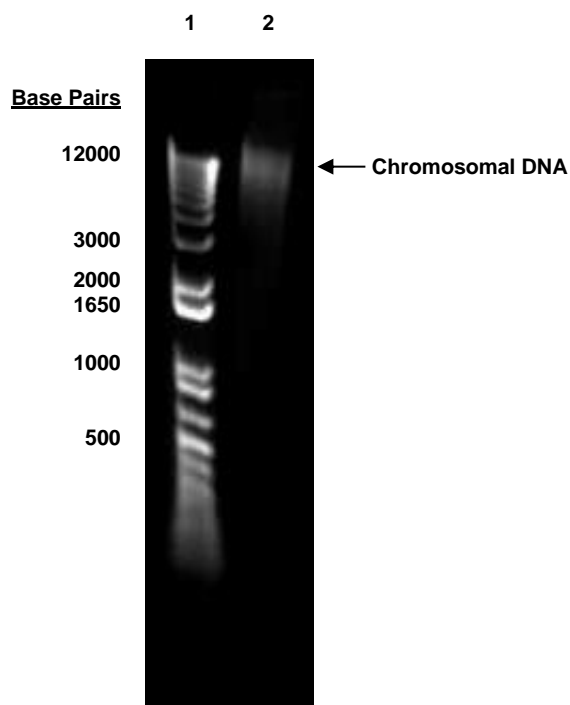
ATCC<sup>®</sup> is a trademark of the American Type Culture Collection.

You are authorized to use this product for research use only. It is not intended for human use.



## Certificate of Analysis for HM-370D

Figure 1



Lane 1: Invitrogen™ TrackIt 1 Kb Plus DNA Ladder™  
Lane 2: 200 ng of HM-370D