

***Klebsiella oxytoca*, Strain MIT 10-5248**

**Catalog No. HM-628**

**Product Description:** *Klebsiella oxytoca* (*K. oxytoca*), strain MIT 10-5248 was isolated from human blood.

**Lot<sup>1,2</sup>: 59884451**

**Manufacturing Date: 08JUL2011**

TEST	SPECIFICATIONS	RESULTS
<b>Phenotypic Analysis</b> Cellular morphology Colony morphologies <sup>3,4</sup>	Report results Report results	Gram-negative rod Colony type 1: Circular, entire, convex, and cream (Figure 1) Colony type 2: Circular, entire, raised and translucent (Figure 1)
<b>Genotypic Analysis</b> Sequencing of 16S ribosomal RNA gene (1480 base pairs)	≥ 99% identical to GenBank: AKCF01000001 ( <i>K. oxytoca</i> , strain MIT 10-5248)	≥ 99% identical to GenBank: AKCF01000001 ( <i>K. oxytoca</i> , strain MIT 10-5248)
<b>Viability (post-freeze)<sup>3</sup></b>	Growth	Growth

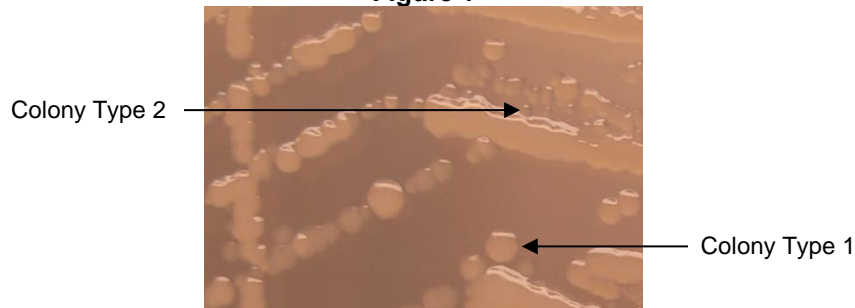
<sup>1</sup>Quality control of HMP material is only performed to demonstrate that the material distributed by BEI Resources is identical to the deposited material. It should not be considered a complete characterization of the deposited organism.

<sup>2</sup>*K. oxytoca*, strain MIT 10-5248 (also referred to as 10-5248) was deposited by Professor James G. Fox, DVM, DACLAM, Division of Comparative Medicine, Massachusetts Institute of Technology, Cambridge, Massachusetts. HM-628 was produced by inoculation of the deposited material into Nutrient Broth and incubated for 24 hours at 37°C in an aerobic atmosphere. Broth inoculum was added to Kolles which were grown 24

<sup>3</sup>24 hours at 37°C in an aerobic atmosphere on Nutrient Agar

<sup>4</sup>Two colony types were observed. Plating of the individual colony types showed that they did not revert back to the mixed colony type. The 16S ribosomal RNA gene of each colony type was sequenced and found to be consistent with the other colony type and *K. oxytoca*.

**Figure 1**



**Date:** 16 AUG 2012

**Signature:**

**Title:**

Technical Manager, BEI Authentication or designee

ATCC®, on behalf of BEI Resources, hereby represents and warrants that the material provided under this certificate has been subjected to the tests and procedures specified and that the results described, along with any other data provided in this certificate, are true and accurate to the best of ATCC®'s knowledge.

ATCC® is a trademark of the American Type Culture Collection.

You are authorized to use this product for research use only. It is not intended for human use.

