

Genomic DNA from *Neisseria flavescens*, Strain SK114

Catalog No. HM-115D

Product Description: Genomic DNA was obtained from a preparation of *Neisseria flavescens* (*N. flavescens*), strain SK114.

Lot^{1,2}: 60866073

Manufacturing Date: 23MAY2012

TEST	SPECIFICATIONS	RESULTS
Sequencing of 16S Ribosomal RNA Gene (~ 1490 base pairs)	≥ 99% identical to GenBank: ACQV01000017 (<i>N. flavescens</i> , strain SK114)	≥ 99% identical to GenBank: ACQV01000017 (<i>N. flavescens</i> , strain SK114)
Agarose Gel Electrophoresis	High molecular weight chromosomal DNA	High molecular weight chromosomal DNA (Figure 1)
Concentration by PicoGreen[®] Measurement	0.7 to 1.5 µg in 25 to 100 µL per vial	0.9 µg in 27 µL per vial (35 µg/mL)
Functional Activity by PCR Amplification 16S ribosomal RNA gene	~ 1500 bp amplicon	~ 1500 bp amplicon
OD₂₆₀/OD₂₈₀ Ratio	1.7 to 2.0	1.9
Bacterial Inactivation 10% of total yield plated on Chocolate Agar (GC Medium) ^{3,4}	No viable bacteria detected	No viable bacteria detected

¹Quality control of HMP organisms used for DNA extraction is only performed to demonstrate that the material produced by BEI Resources is identical to the deposited material. It should not be considered a complete characterization of the deposited organism.

²The bacterial preparation used for extraction of genomic DNA was produced by culture of BEI Resources HM-115 (Lot 60609340). Genomic DNA was extracted using proprietary technology.

³7 days at 37°C in an aerobic atmosphere with 5% CO₂

⁴An extraction procedure was used that has been shown to consistently inactivate 100% of Gram-positive and Gram-negative bacteria.

Date: 27 SEP 2012

Signature: 

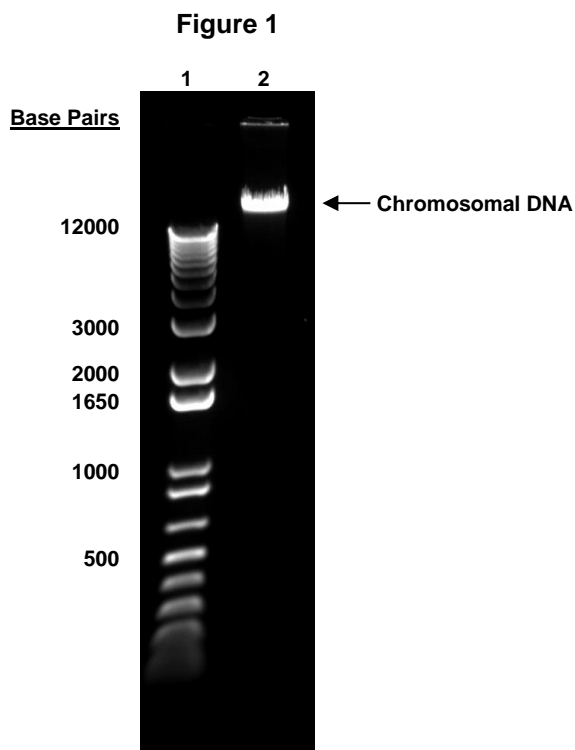
Title: Technical Manager, BEI Authentication or designee

ATCC[®], on behalf of BEI Resources, hereby represents and warrants that the material provided under this certificate has been subjected to the tests and procedures specified and that the results described, along with any other data provided in this certificate, are true and accurate to the best of ATCC[®]'s knowledge.

ATCC[®] is a trademark of the American Type Culture Collection.

You are authorized to use this product for research use only. It is not intended for human use.





Lane 1: Invitrogen™ TrackIt 1 Kb Plus DNA Ladder™
Lane 2: 200 ng of HM-115D