

Mycobacterium tuberculosis*, Strain HN878, Cell Membrane Fraction*Catalog No. NR-14833**

This reagent is the tangible property of the U.S. Government.

Product Description: NR-14833 is a preparation of the cell membrane fraction of *Mycobacterium tuberculosis*, strain HN878 and contains the cytoplasmic membrane and components of the outer lipid layer.

Lot: 61190400**Manufacturing Date: 13AUG2011**

QC testing was performed by Colorado State University under the TB Vaccine Testing and Research Materials Contract (NIH). The Colorado State University documentation for lot 10.HN878.2.25.5.MEM is attached.

ATCC[®], on behalf of BEI Resources, hereby represents and warrants that the material provided under this certificate has been subjected by the contractor to the tests and procedures specified and that the results described, along with any other data provided in this certificate, are true and accurate to the best of ATCC[®]'s knowledge.

ATCC[®] is a trademark of the American Type Culture Collection.

You are authorized to use this product for research use only. It is not intended for human use.



WORK SHEET FOR MEMBRANE

General Information

Product Lot Number: 10.HN878.2.25.5.MEM
Species: Mycobacterium tuberculosis
Strain: HN878

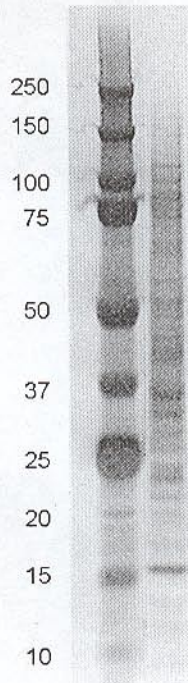
Sonication and Fractionation Information

Starting material (lot #): 10.HN878.2.25.5.wcg
Cell amount (wet weight): 43.8g
SOP #: PP007.1 Notebook pages: Nick May #45
Date of French Press Sonication: 07/26/11; Buffer used: 1mM EDTA-PBS
Centrifugation Notes Centrifuged two times at 100,000 x g to separate from cytosol
Date 10 mM ammonium bicarbonate dialysis started: 08/10/11
date completed: 08/13/11
Notebook; page(s): Prucha #106

Quality Control Information

Clarity of product/suspension after dialysis: Clear, brownish color
BCA: 3.05 $\mu\text{g}/\mu\text{l}$. Notebook and page(s): Prucha #109
Total volume: 12.5 ml Total amount of Protein: 38.11 mg
Silver Stain Date: 08/16/11 Notebook and page(s): Prucha #108

QC Gel:



Aliquot Information:
None

C. McHaffey
(Research Scientist)

8-29-11
(date)

[Signature]
(Laboratory Supervisor) 8/30/11
(date)