

Enterococcus faecium, Strain TX1330

Catalog No. HM-204

Product Description: *Enterococcus faecium* (*E. faecium*), strain TX1330 was isolated in 1994 from the feces of a healthy community volunteer at Hermann Hospital in Houston, Texas.

Lot^{1,2}: 61072735

Manufacturing Date: 20JUN2012

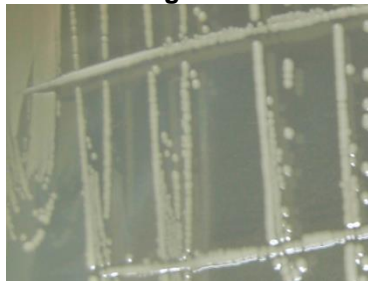
TEST	SPECIFICATIONS	RESULTS
Phenotypic Analysis Cellular morphology Colony morphology ³	Report results Report results	Gram-positive cocci Circular, convex, entire, cream, smooth and translucent (Figure 1)
Genotypic Analysis Sequencing of 16S ribosomal RNA gene (~ 1450 base pairs)	≥ 99% identical to GenBank: ACHL01000045 (<i>E. faecium</i> , strain TX1330)	≥ 99% identical to GenBank: ACHL01000045 (<i>E. faecium</i> , strain TX1330)
Viability (post-freeze)³	Growth	Growth

¹Quality control of HMP material is only performed to demonstrate that the material distributed by BEI Resources is identical to the deposited material. It should not be considered a complete characterization of the deposited organism.

²*E. faecium*, strain TX1330 was deposited by Cesar A. Arias, M.D., Ph.D., Assistant Professor of Medicine, Department of Internal Medicine, The University of Texas Health Science Center at Houston, Houston, Texas. The deposited material was inoculated into Brain Heart Infusion broth (ATCC medium 44) and incubated for 24 hours at 37°C in an aerobic atmosphere with 5% CO₂. Broth inoculum was added to Kolles which were grown 24 hours at 37°C in an aerobic atmosphere with 5% CO₂ to produce this lot.

³24 hours at 37°C in an aerobic atmosphere with 5% CO₂ on Brain Heart Infusion Agar

Figure 1



Date: 12 OCT 2012

Signature: 

Title: Technical Manager, BEI Authentication or designee

ATCC®, on behalf of BEI Resources, hereby represents and warrants that the material provided under this certificate has been subjected to the tests and procedures specified and that the results described, along with any other data provided in this certificate, are true and accurate to the best of ATCC®'s knowledge.

ATCC® is a trademark of the American Type Culture Collection.

You are authorized to use this product for research use only. It is not intended for human use.

