

**Monoclonal Anti-*Mycobacterium tuberculosis* Ag85 Complex (FbpA/FbpB/FbpC; Genes Rv3804c, Rv1886c, Rv0129c), Clone IT-44 (HBT7) (produced *in vitro*)****Catalog No. NR-13826**

This reagent is the tangible property of the U.S. Government.

**Product Description:**

Antibody Designation (Original Designation): IT-44 (HBT7)

Monoclonal antibody to *Mycobacterium tuberculosis*, strain H37Rv Antigen 85 complex (FbpA/FbpB/FbpC) was produced in cell culture using a B cell hybridoma generated by the fusion of myeloma cells with immunized mouse splenocytes.

**Lot: 61202619****Manufacturing Date: 23AUG2012**

QC testing was performed by Colorado State University under the TB Vaccine Testing and Research Materials Contract (NIH). The Colorado State University documentation for bulk lot 10.IT.44.12.9.32.mm is attached. This lot was aliquoted at ATCC®.

ATCC®, on behalf of BEI Resources, hereby represents and warrants that the material provided under this certificate has been subjected by the contractor to the tests and procedures specified and that the results described, along with any other data provided in this certificate, are true and accurate to the best of ATCC®'s knowledge.

ATCC® is a trademark of the American Type Culture Collection.

You are authorized to use this product for research use only. It is not intended for human use.



## TB Contract Antibody QC Sheet

### General Information:

Product: Monoclonal antibody against 32 kDa protein (Rv1886c, Rv0129c, Rv3804c)  
Lot Number: 10.IT.44.12.9.32.mm  
Species: *Mycobacterium tuberculosis*  
Strain: H37Rv  
Type: Culture supernatant

### Production Information:

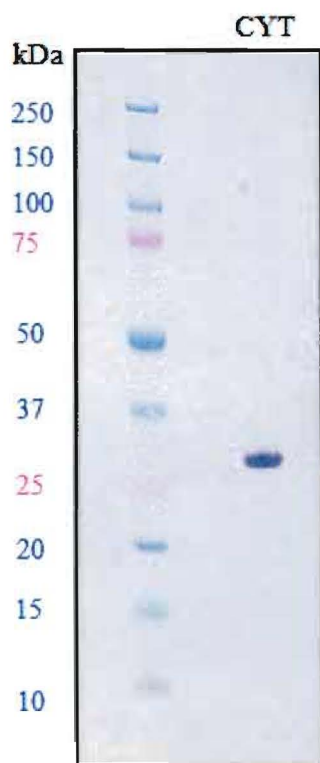
Cell Line: \_\_\_\_\_ SOP#: \_\_\_\_\_ Notebook/pp: \_\_\_\_\_, \_\_\_\_\_  
Amount of CS Harvested: \_\_\_\_\_ Clarity: \_\_\_\_\_  
IgG Purification: \_\_\_\_\_ SOP#: \_\_\_\_\_ Notebook/pp: \_\_\_\_\_, \_\_\_\_\_

### QC Information:

Tested Against: Cytosol, 5  $\mu$ g SOP#: 102 Notebook/pp: KES TB #6, pp. 47-48  
Titer: 1:50 Western Blot: X ELISA:

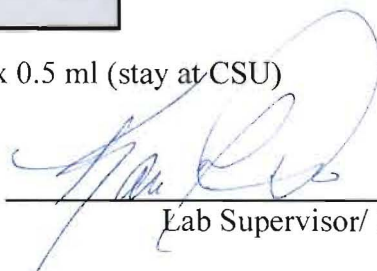
### Special Instructions:

QC Western Blot:



**Aliquot Information:** 2 x 27 ml (to BEI), 10 x 0.5 ml (stay at CSU)

 12/13/10  
Research Associate/ Date

 12/13/2010  
Lab Supervisor/ Date