

Polyclonal Anti-*Mycobacterium tuberculosis* Gene Rv1738 (antiserum, Rabbit)**Catalog No. NR-36511**

This reagent is the tangible property of the U.S. Government.

Product Description:

Antibody Designation: α -Rv1738

Polyclonal antiserum to a hypothetical protein (10 kDa protein, Gene Rv1738) of *Mycobacterium tuberculosis*, strain H37Rv was produced in rabbits. The antiserum is reported to be active in ELISA and Western Blot assays.

Lot: 61131531**Manufacturing Date: 08AUG2012**

QC testing was performed by Colorado State University under the TB Vaccine Testing and Research Materials Contract (NIH). The Colorado State University documentation for lot 11.Anti-RV1738.11.15.10kDa.rp is attached.

ATCC[®], on behalf of BEI Resources, hereby represents and warrants that the material provided under this certificate has been subjected by the contractor to the tests and procedures specified and that the results described, along with any other data provided in this certificate, are true and accurate to the best of ATCC[®]'s knowledge.

ATCC[®] is a trademark of the American Type Culture Collection.

You are authorized to use this product for research use only. It is not intended for human use.



TB Contract Antibody QC Sheet

General Information:

Product: Anti-Rv1738 Rabbit Polyclonal Antibody
Lot Number: 11.Anti-Rv1738.11.15.10kDa.rp
Species: *Mycobacterium tuberculosis*
Strain: H37Rv
Type: Rabbit Sera

Production Information:

Cell Line: _____ SOP#: _____ Notebook/pp: _____
Amount of CS Harvested: _____ Clarity: clear
IgG Purification: _____ SOP#: _____ Notebook/pp: _____, _____

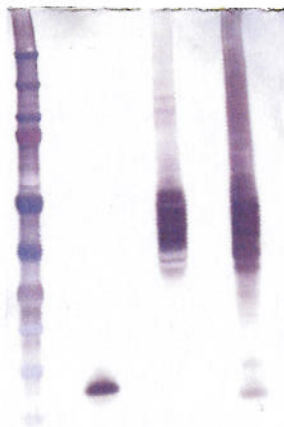
QC Information:

Filtered with 0.2 μ m PES filter
Tested Against: Subcellular Fractions and Recombinant Rv1738 SOP#: _____
Notebook/pp: Keri Wright/Charis Ackerson, Antibody Notebook #1, pgs 15-36 and Keri Wright Notebook #1 pgs 1-13
Titer: 1:2500 Western blot: X ELISA: _____

Special Instructions:

QC Western blot:

1. Protein Standard
2. Rv1738 (10 ng)
3. CFP
4. CW



Aliquot Information: 131 x 0.25 ml and 1 x 137.25 ml

* Aliquot information reflects aliquots made at the time of QC. Bulk aliquots will be broken down as needed.

Keri Ann Wright 8/8/12
Research Associate / Date

[Signature] 8/10/2012
Lab Supervisor / Date