

**Polyclonal Anti-*Mycobacterium tuberculosis* CFP (antiserum, Rabbit)****Catalog No. NR-13808**

This reagent is the tangible property of the U.S. Government.

**Product Description:**

Antibody Designation (Original Designation): C193

Polyclonal antiserum to the culture filtrate proteins (CFP) of *Mycobacterium tuberculosis*, strain H37Rv was produced in rabbits. The antiserum is reported to be active in ELISA and Western Blot assays.

**Lot: 61181939****Manufacturing Date: 26SEP2012**

QC testing was performed by Colorado State University under the TB Vaccine Testing and Research Materials Contract (NIH). The Colorado State University documentation for lot 12.Anti-CFP.8.20.rp is attached.

ATCC<sup>®</sup>, on behalf of BEI Resources, hereby represents and warrants that the material provided under this certificate has been subjected by the contractor to the tests and procedures specified and that the results described, along with any other data provided in this certificate, are true and accurate to the best of ATCC<sup>®</sup>'s knowledge.

ATCC<sup>®</sup> is a trademark of the American Type Culture Collection.

You are authorized to use this product for research use only. It is not intended for human use.



## TB Contract Antibody QC Sheet

### General Information:

Product: Anti-CFP Rabbit Polyclonal Antibody (C193)  
Lot Number: 12.Anti-CFP.8.20.rp  
Species: *Mycobacterium tuberculosis*  
Strain: H37Rv  
Type: Rabbit Sera

### Production Information:

Cell Line: \_\_\_\_\_ SOP#: \_\_\_\_\_ Notebook/pp: \_\_\_\_\_  
Amount of CS Harvested: \_\_\_\_\_ Clarity: clear  
IgG Purification: \_\_\_\_\_ SOP#: \_\_\_\_\_ Notebook/pp: \_\_\_\_\_, \_\_\_\_\_

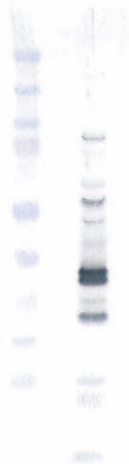
### QC Information:

Filtered with 0.2  $\mu$ m PES filter  
Tested Against: CFP SOP#: \_\_\_\_\_  
Notebook/pp: Keri Wright, Antibody Notebook #3 Y3 pAb, pgs 17-22, 24-30  
Titer: 1:10,000 Western blot: X ELISA: \_\_\_\_\_

### Special Instructions:

QC Western blot:

1. Protein Standard
2. CFP



**Aliquot Information:** 160 x 0.1 ml and 1 x 141.50 ml

\*Aliquot information reflects aliquots made at the time of QC. Bulk aliquots will be broken down as needed.

Keri Lou Wiksels 9/24/12  
Research Associate / Date

[Signature] 9/24/2012  
Lab Supervisor / Date