

***Mycobacterium tuberculosis*, Strain CDC1551, Whole Cell Lysate****Catalog No. NR-14823**

This reagent is the tangible property of the U.S. Government.

**Product Description:** *Mycobacterium tuberculosis*, strain CDC1551 whole cell lysate contains proteins, lipids and carbohydrates present within the bacterial cell. A culture was grown to late-log phase in glycerol-alanine-salts medium, and inactivated by gamma irradiation. Cells were suspended in PBS buffer containing 8 mM EDTA, proteinase inhibitors, DNase, and RNase and disrupted by French Press until approximately 90% breakage was obtained. The lysate was centrifuged to pellet the unbroken cells, and the cleared supernatant was removed. The protein content of the whole cell lysate was quantified using the BCA protein assay.

**Lot: 61131529****Manufacturing Date: 13SEP2012**

Production and QC testing were performed by Colorado State University (CSU). The CSU documentation for lot 12.CSU93.8.7.WCL is attached.

ATCC<sup>®</sup>, on behalf of BEI Resources, hereby represents and warrants that the material provided under this certificate has been subjected by the contractor to the tests and procedures specified and that the results described, along with any other data provided in this certificate, are true and accurate to the best of ATCC<sup>®</sup>'s knowledge.

ATCC<sup>®</sup> is a trademark of the American Type Culture Collection.

You are authorized to use this product for research use only. It is not intended for human use.



# WORK SHEET FOR WHOLE CELL LYSATE

## General Information

Product Lot Number: 12.CSU93.8.7.WCL  
Species: M. tuberculosis  
Strain: CDC1551

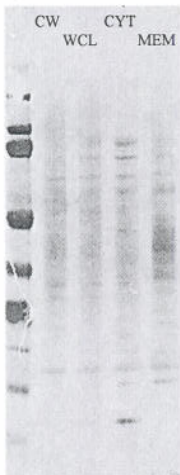
## Sonication and Fractionation Information

Starting material (lot #): 10.CSU93.8.23.6.WCg & 06.CSU93.11.17.8.WCg.IHO  
Cell amount (wet weight): 75 g  
SOP #: PP007.2 Notebook pages: Rachel Hazenfield Protein #1 pp. 55-59  
Date of French Press Sonication: 08/07/2012 and 09/05/2012; Buffer used: PBS-EDTA with protease inhibitor, DNase, and RNase  
Centrifugation Notes Centrifuged at 3,000 rpm for 15 minutes at 4°C twice (broke cells further after first spin produced too large of a pellet and repeated spin)  
Date 10 mM ammonium bicarbonate dialysis started: 09/11/2012  
date completed: 09/13/2012  
Notebook; page(s): Rachel Hazenfield Protein #1 pg. 56

## Quality Control Information

Clarity of product/suspension after dialysis: Milky- off white (normal)  
BCA: 11.295  $\mu\text{g}/\mu\text{l}$ . Notebook and page(s): Rachel Hazenfield Protein #1 pg. 57  
Total volume: 65.52 ml Total amount of Protein: 740mg  
Silver Stain Date: 09/25/2012. Notebook and page(s): Rachel Hazenfield Protein #1 pg. 59

QC Gel: Ran 4ug of each



## Aliquot Information:

74 x 10mg

Rachel M. Hazenfield  
(Research Associate) (date)

[Signature] 9/26/2012  
(Laboratory Supervisor) (date)