

Soluble Fusion Glycoprotein with C-Terminal Histidine Tag from Respiratory Syncytial Virus, A2, Recombinant Produced in 293F Cells

Catalog No. NR-28908

This reagent is the tangible property of the U.S. Government.

Product Description: A recombinant form of the fusion glycoprotein (F) from respiratory syncytial virus (RSV) was produced by transfection of 293F cells with a plasmid encoding a sequence-optimized F gene from RSV, A2. The transmembrane and cytoplasmic domain sequences were removed from the 3' end of the plasmid gene and were replaced with sequences encoding a trimerization domain and a 6-histidine tag. Soluble protein was purified from the cell culture supernatant using nickel chromatography.

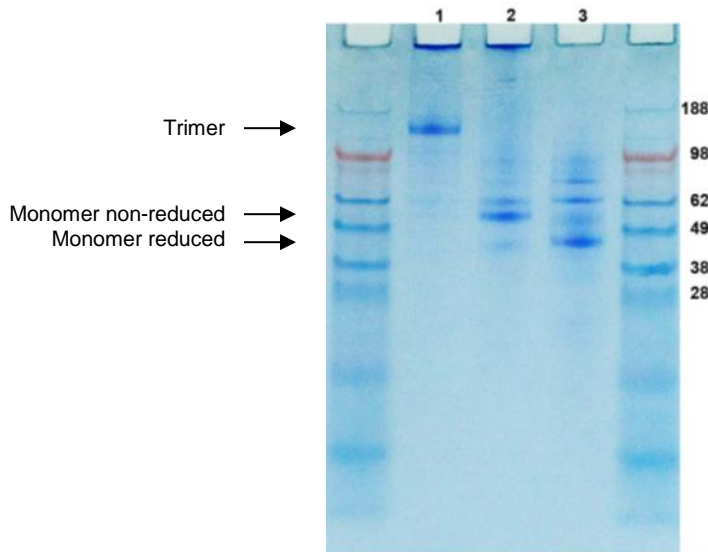
Lot: 61176824

Manufacturing Date: 29AUG2012

TEST	SPECIFICATIONS	RESULTS
SDS-PAGE	Dominant band of ~ 150 kDa observed under non-reducing conditions ≥ 80% pure	Dominant band of ~ 150 kDa observed under non-reducing conditions (Figure 1) ≥ 83% pure
Protein Content	0.1 mg per vial	0.1 mg per vial
Concentration by Nanodrop Spectrophotometry	1 mg per mL	1 mg per mL
Functional Activity by ELISA Mouse monoclonal antibody to RSV F ¹ Antigenic site B (13-1) Antigenic site C (1302A) Mouse monoclonal antibody to RSV glycoprotein	Reactive Reactive Nonreactive	Reactive Reactive Nonreactive
Bioburden on LB Plates	Report results	40 colony-forming units per mL
Endotoxin (LAL Assay)	Report results	31.8 EU per mL

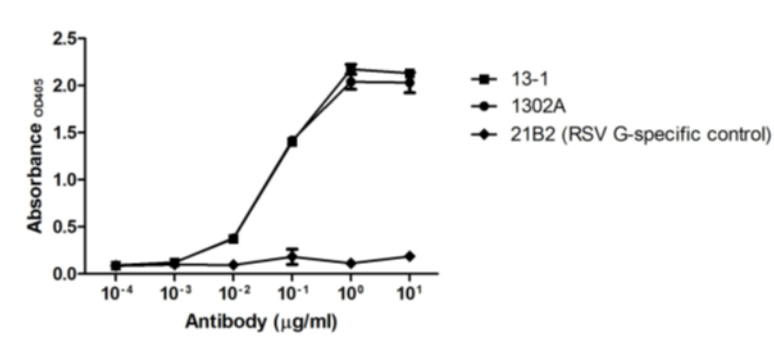
¹Antigenic site-specific monoclonal antibodies are described in: Beeler, J. A. and K. V. W. Coelingh. "Neutralization Epitopes of the F Glycoprotein of Respiratory Syncytial Virus: Effect of Mutation upon Fusion Function." *J. Virol.* 63 (1989): 2941-2950. PubMed: 2470922.

Figure 1 – SDS-PAGE



Lane 1: No treatment
 Lane 2: 80°C for 20 minutes
 Lane 3: 80°C for 20 minutes and β-mercaptoethanol

Figure 2 – ELISA



Date: 09 NOV 2012

Signature:

Dorothy C. Young

Title:

Technical Manager, BEI Authentication or designee

ATCC®, on behalf of BEI Resources, hereby represents and warrants that the material provided under this certificate has been subjected by the contractor to the tests and procedures specified and that the results described, along with any other data provided in this certificate, are true and accurate to the best of ATCC®'s knowledge.

ATCC® is a trademark of the American Type Culture Collection.
 You are authorized to use this product for research use only. It is not intended for human use.

