

**Prevotella oris, Strain F0302**

**Catalog No. HM-93**

**Product Description:** *Prevotella oris*, strain F0302 was isolated in November 1978 from subgingival plaque of a healthy, 20-year-old white male with severe periodontitis in the United States.

**Lot<sup>1,2</sup>: 60671046**

**Manufacturing Date: 03JUN2012**

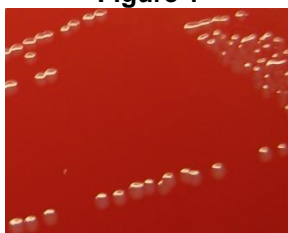
| TEST  | SPECIFICATIONS  | RESULTS   |
|---|---|---|
| <b>Phenotypic Analysis</b><br>Cellular morphology<br>Colony morphology <sup>3</sup>   | Report results<br>Report results  | Gram-negative rod<br>Circular, convex, entire, gray and smooth (Figure 1)         |
| <b>Genotypic Analysis</b><br>Sequencing of 16S ribosomal RNA gene (~ 1460 base pairs) | ≥ 99% identical to GenBank: ACUZ02000034 ( <i>Prevotella oris</i> , strain F0302) | ≥ 99% identical to GenBank: ACUZ02000034 ( <i>Prevotella oris</i> , strain F0302) |
| <b>Viability (post-freeze)<sup>3</sup></b>  | Growth  | Growth  |

<sup>1</sup>Quality control of HMP material is only performed to demonstrate that the material distributed by BEI Resources is identical to the deposited material. It should not be considered a complete characterization of the deposited organism.

<sup>2</sup>*Prevotella oris*, strain F0302 was deposited by Jacques Izard, Assistant Member of the Staff, Department of Molecular Genetics, The Forsyth Institute, Boston, Massachusetts. The deposited material was inoculated into Modified Chopped Meat Medium ([ATCC medium 1490](#)) and incubated for 48 hours at 37°C and anaerobic atmosphere (80% N<sub>2</sub>:10% CO<sub>2</sub>:10% H<sub>2</sub>). The material from the initial growth was passaged twice in Modified Chopped Meat Medium for 48 hours at 37°C and anaerobic atmosphere to produce this lot.

<sup>3</sup>48 hours at 37°C and anaerobic atmosphere on Tryptic Soy Agar with 5% defibrinated sheep blood

**Figure 1**



**Date:** 06 NOV 2012

**Signature:**

**Title:** Technical Manager, BEI Authentication or designee

ATCC®, on behalf of BEI Resources, hereby represents and warrants that the material provided under this certificate has been subjected to the tests and procedures specified and that the results described, along with any other data provided in this certificate, are true and accurate to the best of ATCC®'s knowledge.

ATCC® is a trademark of the American Type Culture Collection. You are authorized to use this product for research use only. It is not intended for human use.

