

***Campylobacter coli*, Strain JV20**

**Catalog No. HM-296**

**Product Description:** *Campylobacter coli*, strain JV20 was isolated from a human gastrointestinal tract.

**Lot<sup>1,2</sup>: 61016480**

**Manufacturing Date: 25JUN2012**

TEST	SPECIFICATIONS	RESULTS
<b>Phenotypic Analysis</b> Cellular morphology Colony morphologies <sup>3,4</sup>	Report results Report results	Gram-negative rod Colony type 1: Circular, convex, entire, gray and mucoïd (Figure 1) Colony type 2: Circular, spreading, flat and gray (Figure 1)
<b>Genotypic Analysis</b> Sequencing of 16S ribosomal RNA gene (~ 1410 base pairs)	≥ 99% identical to GenBank: AEER01000028 ( <i>Campylobacter coli</i> , strain JV20)	≥ 99% identical to GenBank: AEER01000028 ( <i>Campylobacter coli</i> , strain JV20)
<b>Viability (post-freeze)<sup>3</sup></b>	Growth	Growth

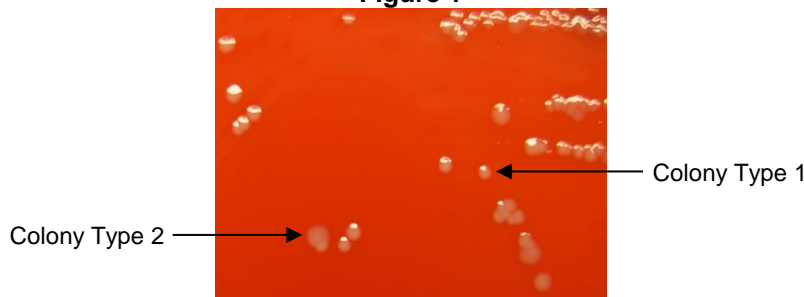
<sup>1</sup>Quality control of HMP material is only performed to demonstrate that the material distributed by BEI Resources is identical to the deposited material. It should not be considered a complete characterization of the deposited organism.

<sup>2</sup>*Campylobacter coli*, strain JV20 was deposited by Professor James Versalovic, M.D., Ph.D., Department of Pathology, Baylor College of Medicine, Houston, Texas. The deposited material was inoculated into Brucella Broth (ATCC medium 1115) and incubated for 48 hours at 37°C in a microaerophilic atmosphere (~ 80% N<sub>2</sub>, 7.5% H<sub>2</sub>, 7.5% CO<sub>2</sub> and 5% O<sub>2</sub>). Broth was then added to Kolles and incubated for 72 hours at 37°C in a microaerophilic atmosphere to produce this lot.

<sup>3</sup>48 hours at 37°C in a microaerophilic atmosphere on Tryptic Soy Agar with 5% defibrinated sheep blood

<sup>4</sup>Two colony types were observed. Plating of the individual colony types showed that they did not revert to the mixed colony type. The 16S ribosomal RNA gene of each colony type was sequenced and found to be consistent with the other colony type and *Campylobacter coli*.

**Figure 1**



**Date:** 06 NOV 2012

**Signature:** 

**Title:** Technical Manager, BEI Authentication or designee

ATCC®, on behalf of BEI Resources, hereby represents and warrants that the material provided under this certificate has been subjected to the tests and procedures specified and that the results described, along with any other data provided in this certificate, are true and accurate to the best of ATCC®'s knowledge.

ATCC® is a trademark of the American Type Culture Collection. You are authorized to use this product for research use only. It is not intended for human use.

