

Lactobacillus gasseri, Strain 224-1

Catalog No. HM-647

Product Description: *Lactobacillus gasseri* (*L. gasseri*), strain 224-1 was isolated in 2007 from human vaginal mucosa.

Lot^{1,2}: 60175222

Manufacturing Date: 05OCT2011

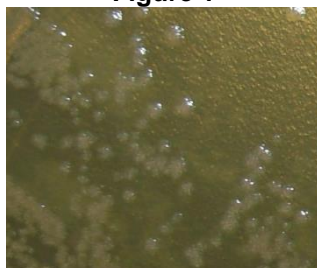
TEST	SPECIFICATIONS	RESULTS
Phenotypic Analysis Cellular morphology Colony morphology ³	Report results Report results	Gram-positive rod Irregular, low convex, beige, translucent and rough (Figure 1)
Genotypic Analysis Sequencing of 16S ribosomal RNA gene (~ 1440 base pairs)	≥ 99% identical to GenBank: ADFT01000005 (<i>L. gasseri</i> , strain 224-1)	≥ 99% identical to GenBank: ADFT01000005 (<i>L. gasseri</i> , strain 224-1)
Viability (post-freeze)³	Growth	Growth

¹Quality control of HMP material is only performed to demonstrate that the material distributed by BEI Resources is identical to the deposited material. It should not be considered a complete characterization of the deposited organism.

²*L. gasseri*, strain 224-1 was deposited by Yang Liu, Ph.D., Senior Scientist & Group Leader, Osel Inc., Santa Clara, California. The deposited material was inoculated into Lactobacilli MRS Broth ([ATCC medium 416](#)) and incubated for 24 hours at 37°C in an aerobic atmosphere with 5% CO₂. The material from the initial growth was passaged once in Lactobacilli MRS Broth for 24 hours at 37°C in an aerobic atmosphere with 5% CO₂ to produce this lot.

³24 hours at 37°C in an aerobic atmosphere with 5% CO₂ on Lactobacilli MRS Agar

Figure 1



Date: 26 OCT 2012

Signature:

Title: Technical Manager, BEI Authentication or designee

ATCC®, on behalf of BEI Resources, hereby represents and warrants that the material provided under this certificate has been subjected to the tests and procedures specified and that the results described, along with any other data provided in this certificate, are true and accurate to the best of ATCC®'s knowledge.

ATCC® is a trademark of the American Type Culture Collection.

You are authorized to use this product for research use only. It is not intended for human use.

