

Shiga Toxin Type 2 Variant C (Stx2c), Recombinant from *Escherichia coli*

Catalog No. NR-13422

This reagent is the tangible property of the U.S. government.

Product Description: NR-13422 is a recombinant form of the Shiga toxin type 2 variant c (Stx2c). Recombinant Stx2c (rStx2c) was expressed in *Escherichia coli* and purified by antibody affinity chromatography.

Lot: 58582673

Manufacturing Date: 18SEP2011

TEST	SPECIFICATIONS	RESULTS
Appearance	Clear and colorless	Clear and colorless
SDS-PAGE (SYPRO Orange Densitometer Scan)	rStx2c represents > 95% of total staining intensity	rStx2c represents > 95% of total staining intensity (Figure 1)
SELDI-TOF Mass Spectrometry	Subunit A - Measured mass within 5% of expected mass (33194 Da) Subunit B - Measured mass within 5% of expected mass (7772 Da)	Subunit A - Measured mass (33133 Da) within 0.2% of expected mass Subunit B - Measured mass (7747 Da) within 0.3% of expected mass
SELDI-TOF Mass Spectrometry of Trypsin Digest	> 50% of total residues accounted for in peptides of expected mass	70% of total residues accounted for in peptides of expected mass ¹
Concentration by Bicinchoninic Acid Protein Assay	Report results	0.047 mg/mL ²
Functional Activity by Western Blot Analysis Rabbit polyclonal antibody to Stx2 Carbonic anhydrase	Reactive Not reactive	Reactive (Figure 2) Not reactive
Cytotoxicity in Vero Cells	Report results	CD ₅₀ ~ 6.7 × 10 ⁻¹³ M (Figure 3)
Sterility	0.22 µm filter-sterilized	0.22 µm filter-sterilized
Endotoxin Content (Limulus Amoebocyte Lysate Assay)	< 10000 EU/mg	< 10000 EU/mg

¹Subunit B not cleaved by trypsin

²Using BSA as a standard

Certificate of Analysis for NR-13422

Figure 1 – SDS-PAGE

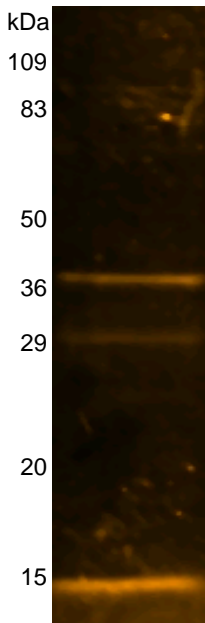
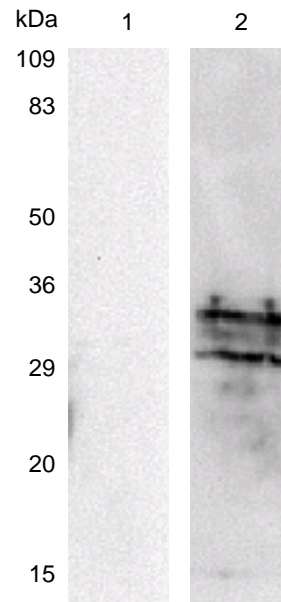
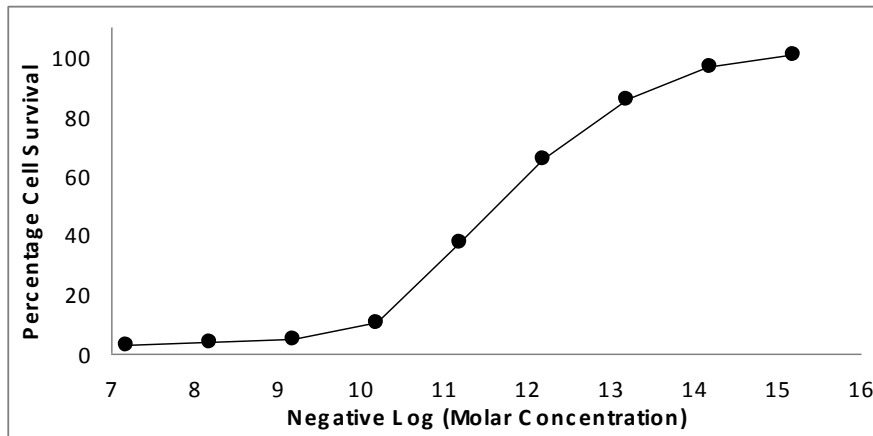


Figure 2 – Western Blot



Lane 1: Carbonic Anhydrase Negative Control
Lane 2: NR-13422

Figure 3 – Vero Cell Cytotoxicity Assay



Date: 27 NOV 2012

Signature: *Dorothy C. Young*

Title: Technical Manager, BEI Authentication or designee

ATCC®, on behalf of BEI Resources, hereby represents and warrants that the material provided under this certificate has been subjected to the tests and procedures specified and that the results described, along with any other data provided in this certificate, are true and accurate to the best of ATCC®'s knowledge.

ATCC® is a trademark of the American Type Culture Collection.
You are authorized to use this product for research use only. It is not intended for human use.

