

**Polyclonal Anti-*Bacillus anthracis* Collagen-like Protein BclA (Locus\_tag: BA\_1222), (immunoglobulin G, Rabbit)**

**Catalog No. NR-9578**

This reagent is the tangible property of the U.S. Government.

**Product Description:** Polyclonal antiserum to the collagen-like protein (BclA) from *Bacillus anthracis* was produced in rabbit and purified by protein G affinity chromatography.

**Lot: 61147324**

**Manufacturing Date: 28AUG2012**

TEST	SPECIFICATIONS	RESULTS
Appearance	Clear and colorless	Clear and colorless
SDS-PAGE (SYPRO Orange Densitometer Scan)	Protein band of interest represents > 95% of total staining intensity	Protein band of interest represents > 95% of total staining intensity (Figure 1)
Concentration by Bicinchoninic Acid Protein Assay <sup>1</sup>	Report results	1.0 mg per mL
<b>Functional Activity</b> Western Blot <sup>2</sup> Recombinant BclA (BEI Resources NR-9577) Carbonic anhydrase ELISA titer <sup>3</sup> Recombinant BclA (BEI Resources NR-9577) Carbonic anhydrase	Reactive Not reactive  Report results Not reactive	Reactive (Figure 2) Not reactive  > 1:10,000 (Figure 3) Not reactive
Sterility	0.22 µm filter-sterilized	0.22 µm filter-sterilized

<sup>1</sup>Using immunoglobulin as a standard

<sup>2</sup>A dilution of 1:5000 is recommended.

<sup>3</sup>A dilution of 1:10000 is recommended.

**Date:** 24 NOV 2014

**Signature:** 

**Title:** Technical Manager, BEI Authentication or designee

ATCC®, on behalf of BEI Resources, hereby represents and warrants that the material provided under this certificate has been subjected by the contractor to the tests and procedures specified and that the results described, along with any other data provided in this certificate, are true and accurate to the best of ATCC®'s knowledge.

ATCC® is a trademark of the American Type Culture Collection.

You are authorized to use this product for research use only. It is not intended for human use.



Figure 1 – SDS-PAGE

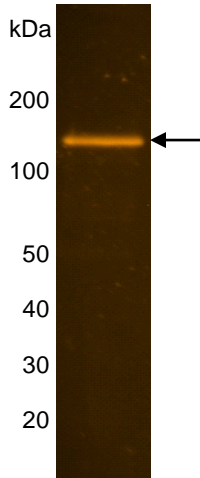
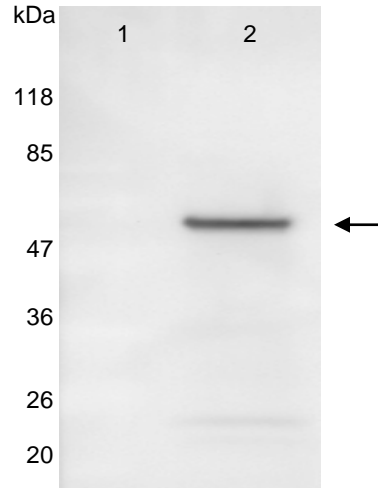


Figure 2 – Western Blot



Lane 1: Carbonic Anhydrase Negative Control  
Lane 2: NR-9577

Figure 3 – Antibody Adsorption Titration Analysis (ELISA)

