

Polyclonal Anti-*Bacillus anthracis* Exosporium Basal Layer Protein BxpB (Locus_Tag: BA_1237), (immunoglobulin G, Rabbit)

Catalog No. NR-12133

This reagent is the tangible property of the U.S. Government.

Product Description: Polyclonal antiserum to exosporium basal layer protein BxpB (locus_tag: BA_1237) of *Bacillus anthracis* (*B. anthracis*) was produced in rabbits and purified by protein G affinity chromatography.

Lot: 61147325

Manufacturing Date: 29AUG2012

TEST	SPECIFICATIONS	RESULTS
Appearance	Clear and colorless	Clear and colorless
SDS-PAGE (SYPRO Orange Densitometer Scan)	Protein band of interest represents > 95% of total staining intensity	Protein band of interest represents > 95% of total staining intensity (Figure 1)
Concentration by Bicinchoninic Acid Protein Assay ¹	Report results	1.0 mg per mL
Functional Activity Western Blot ² Recombinant BxpB (BEI Resources NR-12132) Carbonic anhydrase ELISA titer ³ Recombinant BxpB (BEI Resources NR-12132) Carbonic anhydrase	Reactive Not reactive Report results Not reactive	Reactive (Figure 2) Not reactive > 1:10,000 (Figure 3) Not reactive
Sterility	0.22 µm filter-sterilized	0.22 µm filter-sterilized

¹Using immunoglobulin as a standard

²A dilution of 1:5000 is recommended.

³A dilution of 1:10000 is recommended.

Date: 04 DEC 2014

Signature:



Title: Technical Manager, BEI Authentication or designee

ATCC®, on behalf of BEI Resources, hereby represents and warrants that the material provided under this certificate has been subjected by the contractor to the tests and procedures specified and that the results described, along with any other data provided in this certificate, are true and accurate to the best of ATCC®'s knowledge.

ATCC® is a trademark of the American Type Culture Collection.

You are authorized to use this product for research use only. It is not intended for human use.



Figure 1 – SDS-PAGE

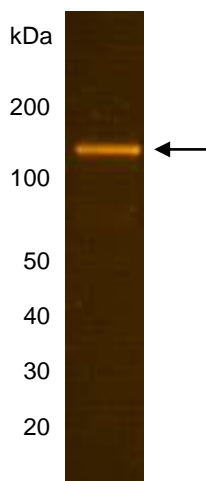
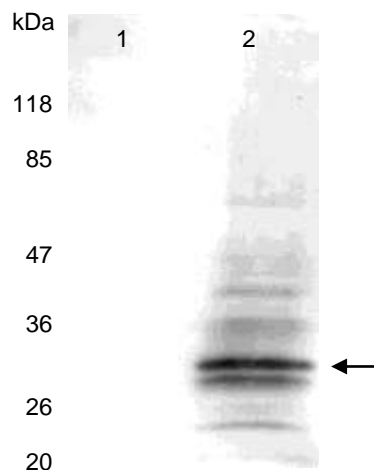


Figure 2 – Western Blot



Lane 1: Carbonic Anhydrase Negative Control
Lane 2: NR-12132

Figure 3 – Antibody Adsorption Titration Analysis (ELISA)

