

***Lactobacillus iners*, Strain LEAF 2053A-b**

**Catalog No. HM-705**

**Product Description:** *Lactobacillus iners* (*L. iners*), strain LEAF 2053A-b was isolated from a human vagina.

**Lot<sup>1,2</sup>: 60771434**

**Manufacturing Date: 04APR2012**

TEST	SPECIFICATIONS	RESULTS
<b>Phenotypic Analysis</b> Cellular morphology <sup>3</sup> Colony morphologies <sup>4</sup> Chocolate agar Tryptic Soy agar with 5% defibrinated sheep blood <sup>5</sup>	Report results  Report results Report results	Gram-variable rod  Irregular, undulate and flat (Figure 1) Colony Type 1: Circular, convex, entire and smooth Colony Type 2: Circular, peaked and entire
<b>Genotypic Analysis</b> Sequencing of 16S ribosomal RNA gene (~ 1280 base pairs)	≥ 99% identical to GenBank: AEKH01000023 ( <i>L. iners</i> , strain LEAF 2053A-b)	≥ 99% identical to GenBank: AEKH01000023 ( <i>L. iners</i> , strain LEAF 2053A-b)
<b>Viability (post-freeze)<sup>4</sup></b>	Growth	Growth

<sup>1</sup>Quality control of HMP material is only performed to demonstrate that the material distributed by BEI Resources is identical to the deposited material. It should not be considered a complete characterization of the deposited organism.

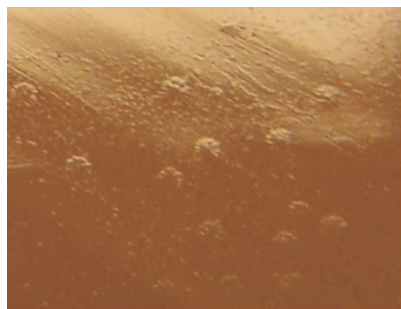
<sup>2</sup>*L. iners*, strain LEAF 2053A-b was deposited by Professor Sharon L. Hillier, Department of Obstetrics, Gynecology and Reproductive Sciences, Magee-Womens Research Institute, University of Pittsburgh, Pittsburgh, Pennsylvania. The deposited material was passaged four times, for 48 to 120 hours at 37°C in an anaerobic atmosphere (80% N<sub>2</sub>:10% CO<sub>2</sub>:10% H<sub>2</sub>) on Tryptic Soy Agar with 5% defibrinated sheep blood plates. The organism was not able to grow on broth thus the inoculum for this lot was obtained from a colonized plate washed with *Lactobacillus* sake medium. The inoculum was then added to Chocolate kolles which were incubated for 72 hours at 37°C in an anaerobic atmosphere to produce this lot.

<sup>3</sup>*L. iners* has a peptidoglycan layer and should stain Gram-positive, however, Gram-variable and Gram-negative cultures are commonly observed for this organism [De Backer E., et al. "Quantitative Determination by Real-time PCR of Four Vaginal *Lactobacillus* Species, *Gardnerella vaginalis* and *Atopobium vaginae* indicates an Inverse Relationship between *L. gasseri* and *L. iners*." *BMC Microbiol.* 7 (2007): 115. PubMed: 18093311].

<sup>4</sup>72 hours at 37°C in an anaerobic atmosphere on Chocolate agar or Tryptic Soy agar with 5% defibrinated sheep blood

<sup>5</sup>Two colony types were observed on Tryptic Soy Agar with 5% defibrinated sheep blood after 72 hours at 37°C in an anaerobic atmosphere. Plating of the individual colony types showed that they did not revert to the mixed colony type. The 16S ribosomal RNA gene of each colony type was sequenced and determined to be consistent with the other colony type and *L. iners*.

**Figure 1**



**Date:** 05 DEC 2012

**Signature:** 

**Title:** Technical Manager, BEI Authentication or designee

ATCC<sup>®</sup>, on behalf of BEI Resources, hereby represents and warrants that the material provided under this certificate has been subjected to the tests and procedures specified and that the results described, along with any other data provided in this certificate, are true and accurate to the best of ATCC<sup>®</sup>'s knowledge.

ATCC<sup>®</sup> is a trademark of the American Type Culture Collection.

You are authorized to use this product for research use only. It is not intended for human use.

