

**Enterococcus faecalis, Strain S613**

**Catalog No. HM-334**

**Product Description:** *Enterococcus faecalis* (*E. faecalis*), strain S613 was isolated in 2004 from the blood of a 64-year-old female hemodialysis patient with fatal bacteremia. The S613 isolate was from blood drawn before treatment with daptomycin.

**Lot<sup>1,2</sup>: 61202631**

**Manufacturing Date: 23AUG2012**

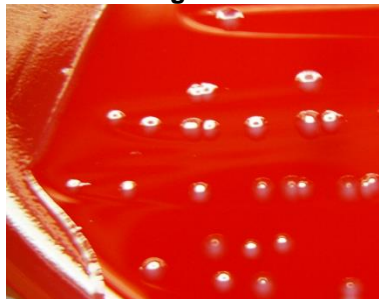
TEST	SPECIFICATIONS	RESULTS
<b>Phenotypic Analysis</b> Cellular morphology Colony morphology <sup>3</sup>  Hemolysis	Report results Report results  Non-hemolytic or $\alpha$ -hemolytic	Gram-positive cocci Circular, convex, gray, smooth and glistening (Figure 1) Non-hemolytic
<b>Genotypic Analysis</b> Sequencing of 16S ribosomal RNA gene (~ 1500 base pairs)	≥ 99% identical to GenBank: ADDP01000088 ( <i>E. faecalis</i> , strain S613)	≥ 99% identical to GenBank: ADDP01000088 ( <i>E. faecalis</i> , strain S613)
<b>Viability (post-freeze)<sup>3</sup></b>	Growth	Growth

<sup>1</sup>Quality control of HMP material is only performed to demonstrate that the material distributed by BEI Resources is identical to the deposited material. It should not be considered a complete characterization of the deposited organism.

<sup>2</sup>*E. faecalis*, strain S613 was deposited by Cesar A. Arias, M.D., Ph.D., Assistant Professor of Medicine, Department of Internal Medicine, The University of Texas Health Science Center at Houston, Houston, Texas, and John Quinn, M.D., Pfizer Global Research, New London, Connecticut. The deposited material was inoculated into Brain Heart Infusion broth and incubated for 24 hours at 37°C in an aerobic atmosphere with 5% CO<sub>2</sub>. Broth inoculum was added to kolles which were grown 24 hours at 37°C and aerobic atmosphere with 5% CO<sub>2</sub> to produce this lot.

<sup>3</sup>24 hours at 37°C in an aerobic atmosphere with 5% CO<sub>2</sub> on Tryptic Soy agar with 5% defibrinated sheep blood

**Figure 1**



**Date:** 19 NOV 2013

**Signature:** 

**Title:** Technical Manager, BEI Authentication or designee

ATCC®, on behalf of BEI Resources, hereby represents and warrants that the material provided under this certificate has been subjected to the tests and procedures specified and that the results described, along with any other data provided in this certificate, are true and accurate to the best of ATCC®'s knowledge.

ATCC® is a trademark of the American Type Culture Collection. You are authorized to use this product for research use only. It is not intended for human use.

