

***Lachnospiraceae* sp., Strain 2_1_58FAA**

Catalog No. HM-154

Product Description: *Lachnospiraceae* sp., strain 2_1_58FAA was obtained from inflamed biopsy tissue taken from the descending colon of a 39-year-old female patient with ulcerative colitis.

Lot^{1,2}: 61119718

Manufacturing Date: 08AUG2012

TEST	SPECIFICATIONS	RESULTS
Phenotypic Analysis Cellular morphology ³ Colony morphology ⁴	Report results Report results	Gram-variable rods Circular, convex, entire and translucent (Figure 1)
Genotypic Analysis Sequencing of 16S ribosomal RNA gene (~ 1480 base pairs)	≥ 99% identical to GenBank: ACTO01000052 (<i>Lachnospiraceae</i> sp., strain 2_1_58FAA)	≥ 99% identical to GenBank: ACTO01000052 (<i>Lachnospiraceae</i> sp., strain 2_1_58FAA)
Viability (post-freeze)⁴	Growth	Growth

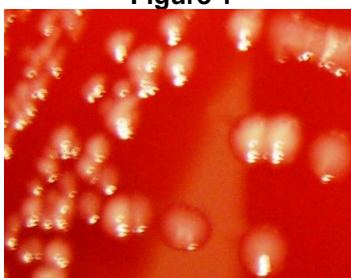
¹Quality control of HMP material is only performed to demonstrate that the material distributed by BEI Resources is identical to the deposited material. It should not be considered a complete characterization of the deposited organism.

²*Lachnospiraceae* sp., strain 2_1_58FAA was deposited by Professor Emma Allen-Vercoe, Department of Molecular and Cellular Biology, University of Guelph, Guelph, Ontario, Canada. The deposited material was inoculated into Trypticase-Yeast Extract (TY) broth and incubated for 72 hours at 37°C and anaerobic atmosphere (80% N₂:10% CO₂:10% H₂). The material from the initial growth was passaged once in TY broth for 48 hours at 37°C and anaerobic atmosphere to produce this lot.

³*Lachnospiraceae* species have a Gram-positive cell wall but may stain Gram-variable or Gram-negative; see Lawson, P. A., et al. "Anaerobes: A Piece in the Puzzle for Alternative Biofuels." *Anaerobe* 17 (2011): 206-210. PubMed: 21699990.

⁴48 hours at 37°C and anaerobic atmosphere on Tryptic Soy Agar with 5% defibrinated sheep blood

Figure 1



Date: 15 JAN 2013

Signature:

Title: Technical Manager, BEI Authentication or designee

ATCC®, on behalf of BEI Resources, hereby represents and warrants that the material provided under this certificate has been subjected to the tests and procedures specified and that the results described, along with any other data provided in this certificate, are true and accurate to the best of ATCC®'s knowledge.

ATCC® is a trademark of the American Type Culture Collection.

You are authorized to use this product for research use only. It is not intended for human use.

