

**Monoclonal Anti-*Mycobacterium tuberculosis* GroEL2 (Gene Rv0440), Clone IT-56 (CBA1)
(produced *in vitro*)****Catalog No. NR-13655**

This reagent is the tangible property of the U.S. Government.

Product Description:

Antibody Designation (Original Designation): IT-56 (CBA1)

Monoclonal antibody to *Mycobacterium tuberculosis*, strain H37Rv GroEL2 protein (also known as 65 kDa antigen) was produced in cell culture using a B cell hybridoma generated by the fusion of myeloma cells with immunized mouse splenocytes.

Lot: 61202618**Manufacturing Date: 13DEC2010**

QC testing was performed by Colorado State University under the TB Vaccine Testing and Research Materials Contract (NIH). The Colorado State University documentation for bulk lot 10.IT.56.12.9.65.mm is attached. This lot was aliquoted at ATCC[®] and each vial contains approximately 500 µL of Monoclonal Anti-*Mycobacterium tuberculosis* GroEL2 (Gene Rv0440), Clone IT-56 (CBA1).

ATCC[®], on behalf of BEI Resources, hereby represents and warrants that the material provided under this certificate has been subjected by the contractor to the tests and procedures specified and that the results described, along with any other data provided in this certificate, are true and accurate to the best of ATCC[®]'s knowledge.

ATCC[®] is a trademark of the American Type Culture Collection.

You are authorized to use this product for research use only. It is not intended for human use.



TB Contract Antibody QC Sheet

General Information:

Product: Monoclonal antibody against 65 kDa protein (Rv0440)
Lot Number: 10.IT.56.12.9.65.mm
Species: *Mycobacterium tuberculosis*
Strain: H37Rv
Type: Culture supernatant

Production Information:

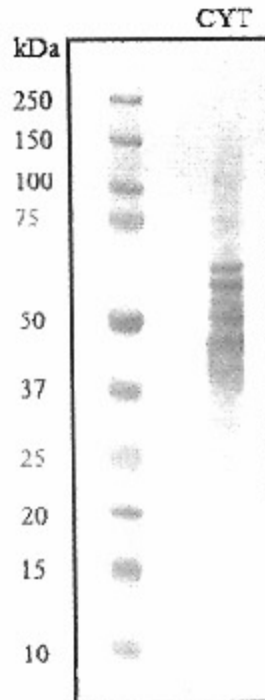
Cell Line: _____ SOP#: _____ Notebook/pp: _____
Amount of CS Harvested: _____ Clarity: _____
IgG Purification: _____ SOP#: _____ Notebook/pp: _____

QC Information:


Tested Against: Cytosol, 5 μ g SOP#: 102 Notebook/pp: KES TB #6, pp. 47-48
Titer: 1:50 Western Blot: X ELISA:

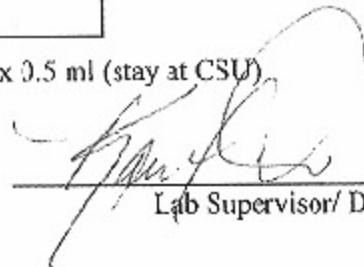
Special Instructions:

QC Western Blot:



Aliquot Information: 2 x 35 ml (to BEI), 10 x 0.5 ml (stay at CSU)

 12/13/10
Research Associate/ Date

 12/13/2010
Lab Supervisor/ Date