

**Polyclonal Anti-Epsilon Toxin from *Clostridium perfringens* (immunoglobulin G, Rabbit)**

**Catalog No. NR-865**

This reagent is the tangible property of the U.S. Government.

**Product Description:** Polyclonal immunoglobulin G antibody specific to the epsilon toxin from *Clostridium perfringens* (*C. perfringens*) was produced by immunization of rabbits with peptides that correspond to distinct internal regions of the full-length epsilon toxin. The peptides were conjugated to keyhole limpet hemocyanin (KLH) using a cysteine added to the carboxyl-terminal end (underlined) and were composed of the following amino acid sequences: 98 NPKVELDGEPSMNYLEDC and 298 EYVIPVDKKEKSNDSNIC. The polyclonal immune globulin G antibody was purified by protein G affinity chromatography.

**Lot: 61145408**

**Manufacturing Date: 04SEP2012**

TEST	SPECIFICATIONS	RESULTS
<b>Appearance</b>	Clear and colorless	Clear and colorless
<b>SDS - PAGE (SYPRO Orange Densitometer Scan)</b>	Protein band of interest represents > 95% of total staining intensity	Protein band of interest represents > 95% of total staining intensity (Figure 1)
<b>Concentration by Bicinchoninic Acid Protein Assay<sup>1</sup></b>	1.0 mg per mL	1.0 mg per mL
<b>Functional Activity</b> Western Blot <sup>2</sup> Epsilon toxin from <i>C. perfringens</i> Carbonic anhydrase Negative Control ELISA titer <sup>3</sup> Recombinant epsilon toxin	Reactive Not reactive  Report results	Reactive (Figure 2) Not reactive  > 1:10,000 (Figure 3)
<b>Sterility</b>	0.22 µm filter-sterilized	0.22 µm filter-sterilized

<sup>1</sup>Using immunoglobulin as a standard

<sup>2</sup>A dilution of 1:5000 is recommended.

<sup>3</sup>A dilution of 1:10000 is recommended.

**Date:** 07 NOV 2014

**Signature:**



**Title:** Technical Manager, BEI Authentication or designee

ATCC®, on behalf of BEI Resources, hereby represents and warrants that the material provided under this certificate has been subjected by the contractor to the tests and procedures specified and that the results described, along with any other data provided in this certificate, are true and accurate to the best of ATCC®'s knowledge.

ATCC® is a trademark of the American Type Culture Collection.

You are authorized to use this product for research use only. It is not intended for human use.



Figure 1 – SDS-PAGE

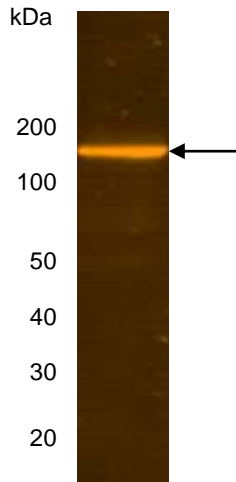
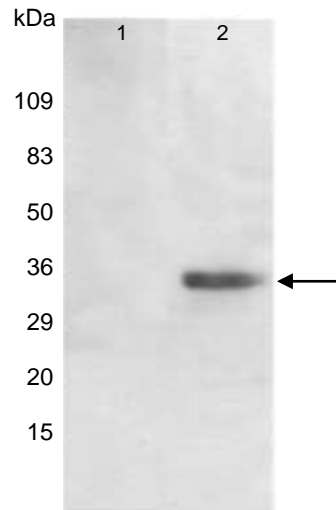


Figure 2 – Western Blot



Lane 1: Carbonic Anhydrase Negative Control  
Lane 2: NR-865

Figure 3 - Antibody Adsorption Titration Analysis (ELISA)

