

Total RNA from *Schistosoma mansoni*, Strain NMRI, Pooled Miracidia

Catalog No. NR-41320

This reagent is the tangible property of the U.S. Government.

Product Description: Total RNA was isolated from *Schistosoma mansoni* (*S. mansoni*), strain NMRI, pooled miracidia. The miracidia were recovered from *S. mansoni* eggs in mice that had been infected with *S. mansoni* cercariae.

Lot^{1,2}: 08032012

Manufacturing Date: 30MAY2012

TEST	SPECIFICATIONS	RESULTS
Concentration	Report results	1 µg in 20 µL per vial (0.05 µg/µL)
OD ₂₆₀ /OD ₂₈₀ Ratio	1.85 to 2.00	1.93
Qualification by RT-PCR Amplification of 28S ribosomal RNA gene ³	~ 288 base pair amplicon	~ 288 base pair amplicon (Figure 1)
Contamination from Human and/or Mouse RNA by qPCR ⁴	None Detected	None Detected

¹QC testing was performed by the Biomedical Research Institute, Rockville, MD (NIH-NIAID Contract HHSN272201000005I)

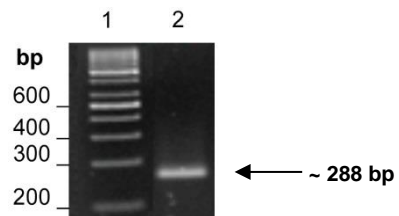
²Total RNA was extracted by RNAzol[®] RT (Molecular Research Center, Inc.) according to the manufacturer's instructions and has consistently shown no DNA contamination.

³Primers were designed to amplify the nucleotide region 39 to 326 of *S. mansoni* 28S ribosomal RNA gene (GenBank Z46503.1).

⁴This test confirms that no contamination occurred during worm collection from mouse or human genetic materials.

Figure 1: Amplification of 28S ribosomal RNA gene for qualification by RT-PCR.

Lane 1: 100 base pair ladder
Lane 2: 288 base pair amplicon



Date: 22 JAN 2013

Signature:

Title: Technical Manager, BEI Authentication or designee

ATCC[®], on behalf of BEI Resources, hereby represents and warrants that the material provided under this certificate has been subjected by the contractor to the tests and procedures specified and that the results described, along with any other data provided in this certificate, are true and accurate to the best of ATCC[®]'s knowledge.

ATCC[®] is a trademark of the American Type Culture Collection.

You are authorized to use this product for research use only. It is not intended for human use.

