

**Enterococcus faecalis, Strain TX1322**

**Catalog No. HM-202**

**Product Description:** *Enterococcus faecalis* (*E. faecalis*), strain TX1322 was isolated in 1994 from the feces of a community volunteer at Hermann Hospital in Houston, Texas.

**Lot<sup>1,2</sup>: 61016479**

**Manufacturing Date: 13JUN2012**

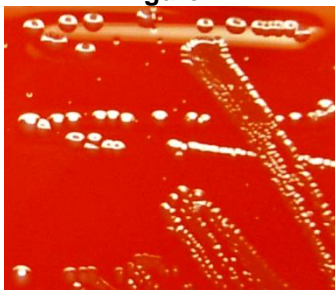
TEST	SPECIFICATIONS	RESULTS
<b>Phenotypic Analysis</b> Cellular morphology Colony morphology <sup>3</sup>	Report results Report results	Gram-positive cocci Circular, convex, entire, smooth and gray (Figure 1)
<b>Genotypic Analysis</b> Sequencing of 16S ribosomal RNA gene (~ 1510 base pairs)	≥ 99% identical to GenBank: ACGM01000106 ( <i>E. faecalis</i> , strain TX1322)	≥ 99% identical to GenBank: ACGM01000106 ( <i>E. faecalis</i> , strain TX1322)
<b>Viability (post-freeze)<sup>3</sup></b>	Growth	Growth

<sup>1</sup>Quality control of HMP material is only performed to demonstrate that the material distributed by BEI Resources is identical to the deposited material. It should not be considered a complete characterization of the deposited organism.

<sup>2</sup>*E. faecalis*, strain TX1322 was deposited by Professor Barbara E. Murray, M.D., Director, Division of Infectious Diseases, Department of Internal Medicine, The University of Texas Health Science Center at Houston, Houston, Texas. The deposited material was passaged multiple times in Brain Heart Infusion broth or on Tryptic Soy Agar plates with 5% defibrinated sheep blood for 24 to 72 hours at 37°C and aerobic atmosphere. Broth inoculum was added to Kolles which were grown 24 hours at 37°C and aerobic atmosphere to produce this lot.

<sup>3</sup>24 hours at 37°C in an aerobic atmosphere on Tryptic Soy Agar with 5% defibrinated sheep blood

Figure 1



**Date:** 29 JAN 2013

**Signature:** 

**Title:** Technical Manager, BEI Authentication or designee

ATCC®, on behalf of BEI Resources, hereby represents and warrants that the material provided under this certificate has been subjected to the tests and procedures specified and that the results described, along with any other data provided in this certificate, are true and accurate to the best of ATCC®'s knowledge.

ATCC® is a trademark of the American Type Culture Collection.

You are authorized to use this product for research use only. It is not intended for human use.

