

***Escherichia coli*, Strain MS 21-1**

Catalog No. HM-346

Product Description: *Escherichia coli* (*E. coli*), strain MS 21-1 was isolated from the colon of a Crohn's disease patient with abnormal histology in New York, New York, USA.

Lot^{1,2}: 61318841

Manufacturing Date: 31OCT2012

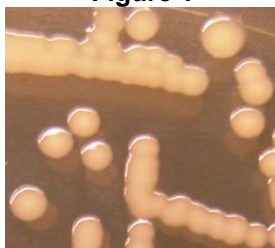
TEST	SPECIFICATIONS	RESULTS
Phenotypic Analysis Cellular morphology Colony morphology ³	Report results Report results	Gram-negative rods Circular, convex, entire, smooth and cream (Figure 1)
Genotypic Analysis Sequencing of 16S ribosomal RNA gene (~ 1410 base pairs)	≥ 99% identical to GenBank: ADTR01000016 (<i>E. coli</i> , strain MS 21-1)	≥ 99% identical to GenBank: ADTR01000016 (<i>E. coli</i> , strain MS 21-1)
Viability (post-freeze)³	Growth	Growth

¹Quality control of HMP material is only performed to demonstrate that the material distributed by BEI Resources is identical to the deposited material. It should not be considered a complete characterization of the deposited organism.

²*E. coli*, strain MS 21-1 was deposited by Edgar C. Boedeker, M.D., Principal Investigator, Research Department, New Mexico Veterans Administration Hospital Care System, Albuquerque, New Mexico, USA. The deposited material was inoculated into Tryptic Soy Broth and incubated for 24 hours at 37°C in an aerobic atmosphere. The material from the initial growth was added to Kolles for 24 hours at 37°C in an aerobic atmosphere to produce this lot.

³24 hours at 37°C in an aerobic atmosphere on Tryptic Soy Agar

Figure 1



Date: 11 MAR 2013

Signature:

Title: Technical Manager, BEI Authentication or designee

ATCC®, on behalf of BEI Resources, hereby represents and warrants that the material provided under this certificate has been subjected to the tests and procedures specified and that the results described, along with any other data provided in this certificate, are true and accurate to the best of ATCC®'s knowledge.

ATCC® is a trademark of the American Type Culture Collection. You are authorized to use this product for research use only. It is not intended for human use.

