

***Lactobacillus* sp., Strain 7\_1\_47FAA**

**Catalog No. HM-228**

**Product Description:** *Lactobacillus* sp., strain 7\_1\_47FAA was isolated from inflamed biopsy tissue taken from the sigmoid colon of a 25-year-old female patient with Crohn's disease.

**Lot<sup>1,2</sup>: 60896600**

**Manufacturing Date: 09APR2012**

TEST	SPECIFICATIONS	RESULTS
<b>Phenotypic Analysis</b> Cellular morphology <sup>3</sup> Colony morphologies Chocolate Agar <sup>4</sup> Tryptic Soy Agar with 5% defibrinated sheep blood <sup>5</sup>	Report results  Report results Report results	Gram-variable rods  Irregular, flat and undulate (Figure 1A) Colony type 1: Circular, undulate and peaked (Figure 1B) Colony type 2: Circular, entire and convex (Figure 1B) Colony type 3: Pinpoint and circular (Figure 1B)
<b>Genotypic Analysis</b> Sequencing of 16S ribosomal RNA gene (~ 1500 base pairs)	≥ 99% identical to GenBank: ACWR01000022 ( <i>Lactobacillus</i> sp., strain 7_1_47FAA)	≥ 99% identical to GenBank: ACWR01000022 ( <i>Lactobacillus</i> sp., strain 7_1_47FAA)
<b>Viability (post-freeze)<sup>6</sup></b>	Growth	Growth

<sup>1</sup>Quality control of HMP material is only performed to demonstrate that the material distributed by BEI Resources is identical to the deposited material. It should not be considered a complete characterization of the deposited organism.

<sup>2</sup>*Lactobacillus* sp., strain 7\_1\_47FAA was deposited by Professor Emma Allen-Vercoe, Department of Molecular and Cellular Biology, University of Guelph, Guelph, Ontario, Canada. The deposited material was inoculated into *Lactobacillus* sake medium (ATCC medium 142) and incubated for 72 hours at 37°C in an anaerobic atmosphere (80% N<sub>2</sub>:10% CO<sub>2</sub>:10% H<sub>2</sub>). The initial growth was passaged once on Tryptic Soy Agar with 5% defibrinated sheep blood for 72 hours at 37°C in an anaerobic atmosphere. Broth inoculum was added to Kolles, which were incubated for 72 hours at 37°C in an aerobic atmosphere to produce this lot.

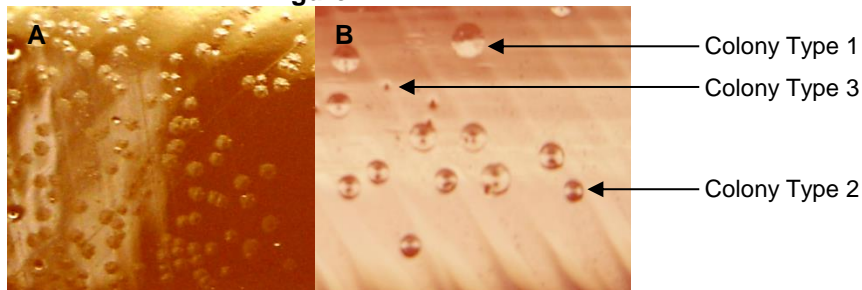
<sup>3</sup>*Lachnospiraceae* species have a Gram-positive cell wall but strains have been reported to stain Gram-variable or Gram-negative (Rainey, F. A. "Family V. *Lachnospiraceae* fam. nov." *Bergey's Manual of Systematic Bacteriology*. Vol 3. 2nd Ed. New York: Springer, 2009. 921).

<sup>4</sup>72 hours at 37°C in an anaerobic atmosphere on Chocolate Agar (GC Medium)

<sup>5</sup>Three colony types were observed following 72 hours at 37°C in an anaerobic atmosphere on Tryptic Soy Agar with 5% defibrinated sheep blood. Plating of the individual colony types showed that they reverted to colony type 2. The 16S ribosomal RNA gene of this colony type was sequenced and found to be consistent with colonies growing on Chocolate Agar after 72 hours at 37°C in an anaerobic atmosphere.

<sup>6</sup>72 hours at 37°C in an anaerobic atmosphere on Chocolate Agar (GC Medium) and Tryptic Soy Agar with 5% defibrinated sheep blood.

**Figure 1**



**Date:** 11 MAR 2013

**Signature:** 

**Title:** Technical Manager, BEI Authentication or designee

ATCC<sup>®</sup>, on behalf of BEI Resources, hereby represents and warrants that the material provided under this certificate has been subjected to the tests and procedures specified and that the results described, along with any other data provided in this certificate, are true and accurate to the best of ATCC<sup>®</sup>'s knowledge.

ATCC<sup>®</sup> is a trademark of the American Type Culture Collection.  
You are authorized to use this product for research use only. It is not intended for human use.

