

***Leptotrichia goodfellowii*, Strain F0264**

Catalog No. HM-12

Product Description: *Leptotrichia goodfellowii* (*L. goodfellowii*), strain F0264 was isolated in March 1979 from the subgingival plaque of a 23-year-old white male patient with experimental gingivitis in the United States.

Lot^{1,2}: 61345035

Manufacturing Date: 20DEC2012

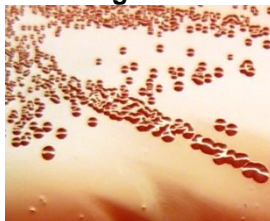
TEST	SPECIFICATIONS	RESULTS
Phenotypic Analysis Cellular morphology Colony morphology ³	Report results Report results	Gram-negative rods Circular, entire, low convex and gray (Figure 1)
Genotypic Analysis Sequencing of 16S ribosomal RNA gene (~ 1410 base pairs)	≥ 99% identical to GenBank: ADAD01000110 (<i>L. goodfellowii</i> , strain F0264)	≥ 99% identical to GenBank: ADAD01000110 (<i>L. goodfellowii</i> , strain F0264)
Viability (post-freeze)³	Growth	Growth

¹Quality control of HMP material is only performed to demonstrate that the material distributed by BEI Resources is identical to the deposited material. It should not be considered a complete characterization of the deposited organism.

²*L. goodfellowii*, strain F0264 was deposited by Jacques Izard, Assistant Member of the Staff, Department of Molecular Genetics, The Forsyth Institute, Boston, Massachusetts. The deposited material was inoculated into Modified Reinforced Clostridial Broth and incubated for 72 hours at 37°C and anaerobic atmosphere (80% N₂:10% CO₂:10% H₂). The material from the initial growth was passaged twice in Modified Reinforced Clostridial Broth for 72 hours at 37°C and anaerobic atmosphere to produce this lot.

³72 hours at 37°C and anaerobic atmosphere (80% N₂:10% CO₂:10% H₂) on Tryptic Soy Agar with 5% defibrinated sheep blood

Figure 1



Date: 04 APR 2013

Signature:

Title: Technical Manager, BEI Authentication or designee

ATCC®, on behalf of BEI Resources, hereby represents and warrants that the material provided under this certificate has been subjected to the tests and procedures specified and that the results described, along with any other data provided in this certificate, are true and accurate to the best of ATCC®'s knowledge.

ATCC® is a trademark of the American Type Culture Collection. You are authorized to use this product for research use only. It is not intended for human use.

