

***Prevotella timonensis*, Strain CRIS 5C-B1**

Catalog No. HM-136

Product Description: *Prevotella timonensis* (*P. timonensis*), strain CRIS 5C-B1 was isolated from a human vagina.

Lot¹⁻³: 61385884

Manufacturing Date: 20DEC2012

TEST	SPECIFICATIONS	RESULTS
Phenotypic Analysis Cellular morphology Colony morphology ⁴	Report results Report results	Gram-negative rods Pinpoint and gray (Figure 1)
Genotypic Analysis Sequencing of 16S ribosomal RNA gene (~ 1470 base pairs)	≥ 99% identical to GenBank: ADEF01000012 (<i>P. timonensis</i> , strain CRIS 5C-B1)	≥ 99% identical to GenBank: ADEF01000012 (<i>P. timonensis</i> , strain CRIS 5C-B1)
Viability (post-freeze)⁴	Growth	Growth

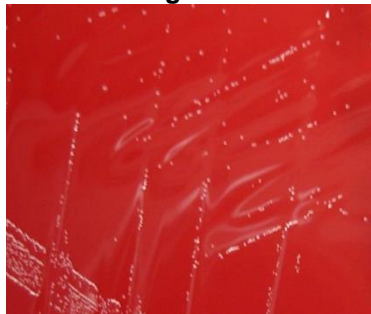
¹Quality control of HMP material is only performed to demonstrate that the material distributed by BEI Resources is identical to the deposited material. It should not be considered a complete characterization of the deposited organism.

²*P. timonensis*, strain CRIS 5C-B1 was deposited by Sharon L. Hillier, Professor, Department of Obstetrics, Gynecology and Reproductive Sciences, Magee-Womens Research Institute, University of Pittsburgh, Pittsburgh, Pennsylvania, USA. BEI Resources HMS-136 (lot 60334579) was inoculated onto Tryptic Soy Agar with 5% defibrinated sheep blood and incubated for 96 hours at 37°C in an anaerobic atmosphere (80% N₂:10% CO₂:10% H₂). The material from the initial growth was added to kolles with Modified Chopped Meat Medium which were incubated for 48 hours at 37°C in an anaerobic atmosphere to produce this lot.

³This organism shows very poor growth in broth.

⁴72 hours at 37°C in an anaerobic atmosphere on Tryptic Soy Agar with 5% defibrinated sheep blood

Figure 1



Date: 09 APR 2013

Signature:

Title:

Technical Manager, BEI Authentication or designee

ATCC®, on behalf of BEI Resources, hereby represents and warrants that the material provided under this certificate has been subjected to the tests and procedures specified and that the results described, along with any other data provided in this certificate, are true and accurate to the best of ATCC®'s knowledge.

ATCC® is a trademark of the American Type Culture Collection.

You are authorized to use this product for research use only. It is not intended for human use.

