

***Vibrio parahaemolyticus*, Strain V05/080 (Serotype O5:K17)**

**Catalog No. NR-31677**

**Product Description:** *Vibrio parahaemolyticus* (*V. parahaemolyticus*), strain V05/080, serotype O5:K17 was isolated from seawater in the Adriatic Sea.

**Lot<sup>1</sup>: 61303332**

**Manufacturing Date: 17OCT2012**

TEST	SPECIFICATIONS	RESULTS
<b>Phenotypic Analysis</b> Cellular morphology Colony morphologies <sup>2,3</sup>  Hemolysis Biochemical characterization: Analytical profile index (API <sup>®</sup> 20E)	Report results Report results  Report results  Consistent with <i>V. parahaemolyticus</i>	Gram-negative rods Colony type 1: Slightly irregular, raised, entire and gray (Figure 1) Colony type 2: Circular, entire and cream (Figure 1) No hemolysis  Consistent with <i>V. parahaemolyticus</i>
<b>Genotypic Analysis</b> Sequencing of 16S ribosomal RNA gene (~ 1490 base pairs)	Consistent with <i>V. parahaemolyticus</i>	Consistent with <i>V. parahaemolyticus</i> <sup>4</sup>
<b>Viability (post-freeze)<sup>2</sup></b>	Growth	Growth

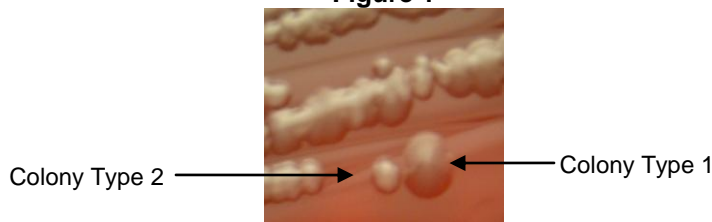
<sup>1</sup>NR-31677 was produced by inoculation of deposited material into Tryptic Soy Broth and grown 24 hours in an aerobic atmosphere at 37°C. Broth inoculum was added to kolles which were grown 24 hours at 37°C and aerobic atmosphere to produce this lot.

<sup>2</sup>24 hours at 37°C and aerobic atmosphere on Tryptic Soy Agar with 5% defibrinated sheep blood

<sup>3</sup>Two colony types were observed. Plating of the individual colony types showed that they did not revert to the mixed colony type. The 16S ribosomal RNA gene of each colony type was sequenced and found to be consistent with the other colony type and *V. parahaemolyticus*.

<sup>4</sup>Also consistent with other *Vibrio* species

**Figure 1**



**Date:** 09 APR 2013

**Signature:** 

**Title:** Technical Manager, BEI Authentication or designee

ATCC<sup>®</sup>, on behalf of BEI Resources, hereby represents and warrants that the material provided under this certificate has been subjected to the tests and procedures specified and that the results described, along with any other data provided in this certificate, are true and accurate to the best of ATCC<sup>®</sup>'s knowledge.

ATCC<sup>®</sup> is a trademark of the American Type Culture Collection. You are authorized to use this product for research use only. It is not intended for human use.

