

**Schistosoma mansoni Microsatellite SMD011 Reverse Primer**

**Catalog No. NR-29385**

This reagent is the tangible property of the U.S. Government.

**Product Description:** NR-29385 is a twenty nucleotide reverse primer designed to amplify microsatellite SMD011 from *Schistosoma mansoni* when paired with the SMD011 forward primer (NR-29384). The sequence of the SMD011-R 20-mer is 5'-AAGTAGGTCAAACCTAAGCAGG-3'.

**Lot<sup>1</sup>: 61433224**

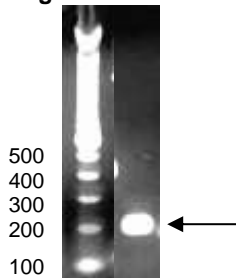
**Manufacturing Date: 29NOV2010**

| TEST   | SPECIFICATIONS   | RESULTS  |
|--|--|--|
| <b>PCR Amplification and Sequencing<sup>2</sup></b><br>Amplicon size<br>NCBI blast of sequence   | ~ 200 base pairs<br>Identical to GenBank: AF325698   | ~ 200 base pairs (Figure 1)<br>Identical to GenBank: AF325698                      |
| <b>Primer Characteristics<sup>1</sup></b><br>Molecular weight<br>Primer melting temperature (T <sub>m</sub> )<br>GC content<br>Primer concentration<br>Moles of primer<br>Micrograms of primer | Report results<br>Report results<br>Report results<br>Report results<br>Report results<br>Report results | 6512 g/mol<br>58.7°C<br>42.9%<br>100 µM<br>3.0 nmoles per vial<br>19.5 µg per vial |

<sup>1</sup>NR-29385 lot: 61433224 was manufactured by Eurofins MWG Operon. Primer characteristics were determined by the manufacturer. The bulk material was thawed and aliquoted at ATCC®.

<sup>2</sup>PCR completed by the Biomedical Research Institute prior to vialing at ATCC®. Additional information is available in: Gower, C. M., et al. "Development and Application of an Ethically and Epidemiologically Advantageous Assay for the Multi-Locus Microsatellite Analysis of *Schistosoma mansoni*." *Parasitology* 134 (2007): 523-536. PubMed: 17096873.

**Figure 1: PCR Amplification of *S. mansoni* Microsatellite SMD011 using NR-29384 and NR-29385**



**Date:** 27 MAR 2013

**Signature:**

**Title:**

Technical Manager, BEI Authentication or designee

ATCC®, on behalf of BEI Resources, hereby represents and warrants that the material provided under this certificate has been subjected by the contributor and manufacturer to the tests and procedures specified and that the results described, along with any other data provided in this certificate, are true and accurate to the best of ATCC®'s knowledge.

ATCC® is a trademark of the American Type Culture Collection.

You are authorized to use this product for research use only. It is not intended for human use.

