

Schistosoma mansoni, Female-Specific W1-5' Primer

Catalog No. NR-29396

This reagent is the tangible property of the U.S. Government.

Product Description: NR-29396 contains a nineteen nucleotide forward primer designed to amplify the female-specific W1 repeat region from *Schistosoma mansoni* (*S. mansoni*) when paired with the W1-3' reverse primer (NR-29398). The sequence of the W1-5' 19-mer is 5'-CAACACAGTGAAATTCTTC-3'.

Lot¹: 61433254

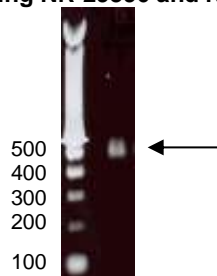
Manufacturing Date: 29NOV2010

TEST	SPECIFICATIONS	RESULTS
PCR Amplification and Sequencing² Amplicon size NCBI blast of sequence	~ 500 bp Identical to GenBank: J04665	~ 500 bp (Figure 1) Identical to GenBank: J04665
Specificity²	Specific for female <i>S. mansoni</i>	Specific for female <i>S. mansoni</i>
Primer Characteristics¹ Molecular weight Primer melting temperature (Tm) GC content Primer concentration Moles of primer Micrograms of primer	Report results Report results Report results Report results Report results Report results	5756 g/mol 53.7°C 36.8% 100 µM 3.0 nmoles per vial 17.2 µg per vial

¹NR-29396 lot: 61433254 was manufactured by Eurofins MWG Operon. Primer characteristics were determined by the manufacturer. The bulk material was thawed and aliquoted at ATCC®.

²PCR completed by the Biomedical Research Institute prior to vialing at ATCC®. Additional information is available in: Gower, C. M., et al. "Development and Application of an Ethically and Epidemiologically Advantageous Assay for the Multi-Locus Microsatellite Analysis of *Schistosoma mansoni*." *Parasitology* 134 (2007): 523-536. PubMed: 17096873.

Figure 1: PCR Amplification of female-specific W1 repeat region using NR-29396 and NR-29398



Date: 29 MAR 2013

Signature:

Title: Technical Manager, BEI Authentication or designee

ATCC®, on behalf of BEI Resources, hereby represents and warrants that the material provided under this certificate has been subjected by the contributor and manufacturer to the tests and procedures specified and that the results described, along with any other data provided in this certificate, are true and accurate to the best of ATCC®'s knowledge.

ATCC® is a trademark of the American Type Culture Collection. You are authorized to use this product for research use only. It is not intended for human use.

