

Total RNA from *Schistosoma mansoni*, Strain NMRI, Eggs

Catalog No. NR-41318

This reagent is the tangible property of the U.S. Government.

Product Description: Total RNA was isolated from *Schistosoma mansoni* (*S. mansoni*), strain NMRI, eggs. Eggs were collected, by the perfusion technique, from the livers of mice that had been infected with *S. mansoni*, strain NMRI, cercariae, for at least 45 days.

Lot^{1,2}: 08032012

Manufacturing Date: 03MAY2012

TEST	SPECIFICATIONS	RESULTS
Concentration	Report results	1 µg in 20 µL per vial (0.05 µg/µL)
OD₂₆₀/OD₂₈₀ Ratio	1.85 to 2.00	2.00
Qualification by RT-PCR Amplification of 28S ribosomal RNA gene ³	288 base pair amplicon	288 base pair amplicon (Figure 1)
Contamination from Human and/or Mouse RNA by qPCR⁴	None Detected	None Detected

¹QC testing was performed by the Biomedical Research Institute, Rockville, MD (NIH-NIAID Contract HHSN2722010000051)

²Total RNA was extracted by RNAzol[®] RT (Molecular Research Center, Inc.) according to the manufacturer's instructions.

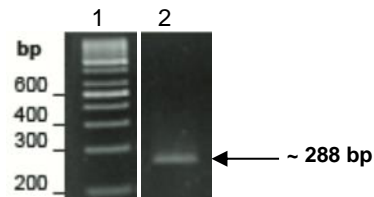
³Primers were designed to amplify the nucleotide region 39 to 326 of *S. mansoni* 28S ribosomal RNA gene (GenBank Z46503.1).

⁴This test confirms that no contamination occurred during egg collection from mouse genetic materials.

Figure 1: Amplification of 28S ribosomal RNA gene for qualification by RT-PCR.

Lane 1: 100 base pair ladder

Lane 2: 288 base pair amplicon from *S. mansoni* 28S ribosomal RNA gene



Date: 24 APR 2013

Signature:

Title:

Technical Manager, BEI Authentication or designee

ATCC[®], on behalf of BEI Resources, hereby represents and warrants that the material provided under this certificate has been subjected by the contractor to the tests and procedures specified and that the results described, along with any other data provided in this certificate, are true and accurate to the best of ATCC[®]'s knowledge.

ATCC[®] is a trademark of the American Type Culture Collection.

You are authorized to use this product for research use only. It is not intended for human use.

