

Escherichia coli, Strain E3B

Catalog No. NR-17715

Product Description: *Escherichia coli* (*E. coli*), strain E3B, serotype O75:K95:H5, was isolated from human peritoneum.

Lot¹: 61175012

Manufacturing Date: 09AUG2012

TEST	SPECIFICATIONS	RESULTS
Phenotypic Analysis Cellular morphology Colony morphologies ^{2,3} Analytical profile index (API [®] 20 E)	Report results Report results Consistent with <i>E. coli</i>	Gram-negative rod Colony type 1: Circular, low convex, entire, smooth and gray (Figure 1) Colony type 2: Circular, flat, entire, mucoid and gray (Figure 1) Consistent with <i>E. coli</i>
Genotypic Analysis Sequencing of 16S ribosomal RNA gene (~ 1480 base pairs) Riboprinter [®] Microbial Characterization System PCR amplification of chromosomal borne virulence markers ⁵ <i>stx1</i> <i>stx2</i>	Consistent with <i>E. coli</i> Consistent with <i>E. coli</i> Report results Report results	Consistent with <i>E. coli</i> ⁴ Consistent with <i>E. coli</i> Negative Negative
Viability (post-freeze)²	Growth	Growth

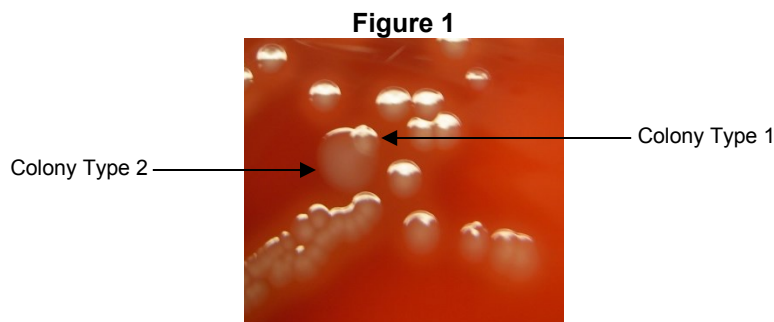
¹*E. coli*, strain E3B was deposited by C. DebRoy, Director, *E. coli* Reference Center, Department of Veterinary and Biomedical Sciences, College of Agricultural Sciences, The Pennsylvania State University, University Park, Pennsylvania. NR-17715 was produced by inoculation of the deposited material into Tryptic Soy broth and grown 24 hours at 37°C in an aerobic atmosphere. Broth inoculum was added to kolles which were grown 24

²24 hours at 37°C in an aerobic atmosphere on Tryptic Soy agar with 5% defibrinated sheep blood

³Two colony types were observed. The 16S ribosomal RNA gene of each colony type was sequenced and found to be consistent with *E. coli*.

⁴Also consistent with *Shigella* species

⁵Performed using the Diarrheagenic *E. coli* 12-Target Multiplex PCR for Virulence Typing Assay (BEI Resources NR-13439); the primers for CVD432, *aggR*, *bfpA*, *esth*, EAF and *astA* are described in Kimata, K., et al. "Rapid Categorization of Pathogenic *Escherichia coli* by Multiplex PCR." *Microbiol. Immunol.* 49 (2005): 485-492. PubMed: 15965295.



Date: 19 MAY 2015

Signature:



BEI Resources Authentication

ATCC[®], on behalf of BEI Resources, hereby represents and warrants that the material provided under this certificate has been subjected to the tests and procedures specified and that the results described, along with any other data provided in this certificate, are true and accurate to the best of ATCC[®]'s knowledge.

ATCC[®] is a trademark of the American Type Culture Collection.

You are authorized to use this product for research use only. It is not intended for human use.

