

**Escherichia coli, Strain 87-1713**

**Catalog No. NR-17652**

**Product Description:** *Escherichia coli* (*E. coli*), strain 87-1713 (10i), serotype O145:H6, is a human isolate from Canada, 1987; it has been typed as an enterohemorrhagic *E. coli* (EHEC) strain. **Note:** The label refers to this item as strain 87-1713 (10i). The (10i) is a lab designation that was used for tracking and is not part of the strain name.

**Lot<sup>1</sup>: 59413903**

**Manufacturing Date: 25AUG2010**

| TEST   | SPECIFICATIONS   | RESULTS  |
|--|--|--|
| <b>Phenotypic Analysis</b><br>Cellular morphology<br>Colony morphology <sup>2</sup><br><br>Analytical profile index (API <sup>®</sup> 20 E)  | Report results<br>Report results<br><br>Consistent with <i>E. coli</i>                                   | Gram-negative rod<br>Circular, convex, entire and translucent (Figure 1)<br>Consistent with <i>E. coli</i> |
| <b>Genotypic Analysis</b><br>Sequencing of 16S ribosomal RNA gene (~ 1470 base pairs)<br>Riboprinter <sup>®</sup> Microbial Characterization System<br>PCR amplification of chromosomal borne virulence markers <sup>4</sup><br><i>stx1</i><br><i>stx2</i> | Consistent with <i>E. coli</i><br>Consistent with <i>E. coli</i><br><br>Report results<br>Report results | Consistent with <i>E. coli</i> <sup>3</sup><br>Consistent with <i>E. coli</i><br><br>Positive<br>Negative  |
| <b>Viability (post-freeze)<sup>2</sup></b>   | Growth   | Growth   |

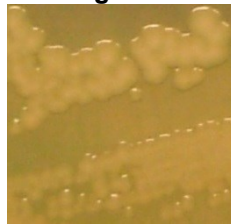
<sup>1</sup>*E. coli*, strain 87-1713 (10i) was deposited by C. DebRoy, Director, *E. coli* Reference Center, Department of Veterinary and Biomedical Sciences, College of Agricultural Sciences, The Pennsylvania State University, University Park, Pennsylvania. NR-17652 was produced by inoculation of the deposited material into Tryptic Soy broth and grown 24 hours at 37°C and aerobic atmosphere. Broth inoculum was added to kolles which were grown 24 hours at 37°C and aerobic atmosphere to produce this lot.

<sup>2</sup>24 hours at 37°C and aerobic atmosphere on Tryptic Soy agar

<sup>3</sup>Also consistent with *Shigella* species

<sup>4</sup>Performed using the Diarrheagenic *E. coli* 12-Target Multiplex PCR for Virulence Typing Assay (BEI Resources NR-13439); the primers for CVD432, *aggR*, *bfpA*, *esth*, EAF and *astA* are described in Kimata, K., et al. "Rapid Categorization of Pathogenic *Escherichia coli* by Multiplex PCR." *Microbiol. Immunol.* 49 (2005): 485-492. PubMed: 15965295.

**Figure 1**



**Date:** 18 MAY 2015

**Signature:** 

BEI Resources Authentication

ATCC<sup>®</sup>, on behalf of BEI Resources, hereby represents and warrants that the material provided under this certificate has been subjected to the tests and procedures specified and that the results described, along with any other data provided in this certificate, are true and accurate to the best of ATCC<sup>®</sup>'s knowledge.

ATCC<sup>®</sup> is a trademark of the American Type Culture Collection.

You are authorized to use this product for research use only. It is not intended for human use.

