

**Activated Epsilon Toxin, from *Clostridium perfringens***

**Catalog No. NR-4670**

(Derived from ATCC® 3626™)

This reagent is the property of the U.S. government.

**Product Description:** Epsilon protoxin was purified from culture supernatants of *C. perfringens* ATCC® 3626™ and activated with trypsin to form the active pore-forming species.

**Lot: 61091852**

**Manufacturing Date: 31JAN2013**

TEST	SPECIFICATIONS	RESULTS
<b>Appearance</b>	Clear and colorless	Clear and colorless
<b>SDS-PAGE (SYPRO Orange densitometer scan)</b>	Dominant band ~ 30 kDa > 95% pure	Dominant band ~ 30 kDa > 98% pure (see Figure 1)
<b>SELDI-TOF Mass Spectrometry</b>	Measured mass within 5% of theoretical value (29230 daltons)	Measured mass within 0.3% of theoretical value (29066 daltons)
<b>SELDI-TOF Mass Spectrometry of Glutamic C Endopeptidase Digest</b>	> 50% of total residues accounted for in peptides of expected mass	71% of total residues accounted for in peptides of expected mass
<b>Concentration by Bicinchoninic Acid Protein Assay</b>	Report results	1.0 mg/mL
<b>Functional Activity</b> Western Blot (see Figure 2) <sup>1</sup> Carbonic anhydrase NR-4670	Non-reactive Reactive	Non-reactive Reactive
<b>Cytotoxicity in MDCK cells</b> NR-4670	Report results	CD <sub>50</sub> = ~ 10 nM
<b>Sterility</b>	0.22 µm filter-sterilized	0.22 µm filter-sterilized
<b>Endotoxin Content</b>	< 10000 EU/mg	< 25 EU/mg
<b>Absorbance Ratio (OD<sub>280</sub>/OD<sub>260</sub>)</b>	Report results	1.74

<sup>1</sup>Using polyclonal immunoglobulin G produced by immunization of rabbits with peptides that correspond to distinct internal regions of the full-length epsilon toxin (BEI Resources NR-865)

Figure 1

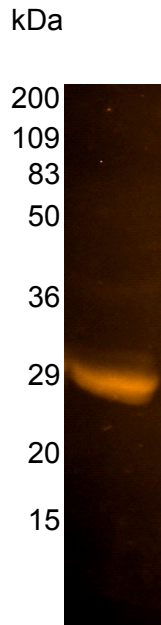
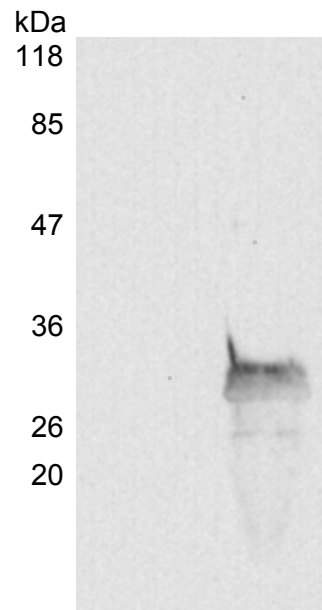


Figure 2



Lane 1: Carbonic anhydrase  
Lane 2: NR-4670

Date: 15 MAY 2013

Signature: *Dorothy C. Young*

Title: Technical Manager, BEI Authentication or designee

ATCC<sup>®</sup>, on behalf of BEI Resources, hereby represents and warrants that the material provided under this certificate has been subjected by the contractor to the tests and procedures specified and that the results described, along with any other data provided in this certificate, are true and accurate to the best of ATCC<sup>®</sup>'s knowledge.

ATCC<sup>®</sup> is a trademark of the American Type Culture Collection.  
You are authorized to use this product for research use only. It is not intended for human use.

