

Salmonella enterica subsp. enterica, Strain MDCH16 (Serovar Tennessee)

Catalog No. NR-20745

Product Description: *Salmonella enterica* (*S. enterica*) subsp. *enterica*, strain MDCH16 (serovar Tennessee) was isolated in 2007 from the urine of a 32-year-old female patient in Michigan, USA.

Lot¹: 61302039

Manufacturing Date: 12OCT2012

TEST	SPECIFICATIONS	RESULTS
Phenotypic Analysis Cellular morphology Colony morphologies ^{2,3} Analytical profile index (API [®] 20 E) ⁴	Report results Report results Consistent with <i>Salmonella</i> spp.	Motile Gram-negative rods Colony type 1: Irregular, undulate, glistening, low convex and gray (Figure 1) Colony type 2: Circular, flat, entire, dull and gray (Figure 1) Colony type 3: Circular, flat, rough, undulate and gray (Figure 1) Colony type 4: Circular, undulate, rough, convex, curled and gray (Figure 1) Consistent with <i>Salmonella</i> spp.
Genotypic Analysis Sequencing of 16S ribosomal RNA gene (~ 1450 base pairs) Riboprinter [®] Microbial Characterization System	Consistent with <i>S. enterica</i> Consistent with <i>S. enterica</i>	Consistent with <i>S. enterica</i> subsp. <i>enterica</i> ⁴ Consistent with <i>S. enterica</i> subsp. <i>enterica</i>
Serogroup Analysis	Report results	Serogroup C1 ^{5,6}
Viability (post-freeze)²	Growth	Growth

¹The deposited material was inoculated into Tryptic Soy broth and incubated for 24 hours at 37°C in an aerobic atmosphere. Broth inoculum was added to kolles, which were incubated for 24 hours at 37°C in an aerobic atmosphere to produce this lot.

²24 hours at 37°C in an aerobic atmosphere on Tryptic Soy agar with 5% sheep blood

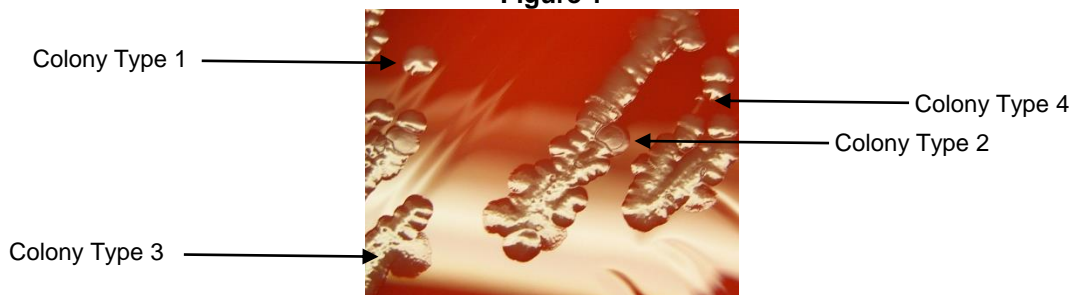
³Four colony types were observed. Plating of the individual colony types showed that they did not revert back to the mixed colony type. The 16S ribosomal RNA gene of each colony type was sequenced and found to be consistent with *S. enterica*.

⁴Additional serological tests are required to determine *Salmonella* species using API[®] 20 E.

⁵Serogroup C₁ contains serovar Tennessee in addition to other serovars

⁶A weak positive reaction for serogroup H was also observed

Figure 1



Certificate of Analysis for NR-20745

Date: 03 JUN 2013

Signature: 

Title: Technical Manager, BEI Authentication or designee

ATCC[®], on behalf of BEI Resources, hereby represents and warrants that the material provided under this certificate has been subjected to the tests and procedures specified and that the results described, along with any other data provided in this certificate, are true and accurate to the best of ATCC[®]'s knowledge.

ATCC[®] is a trademark of the American Type Culture Collection.

You are authorized to use this product for research use only. It is not intended for human use.

