

Salmonella enterica subsp. enterica, Strain MDCH01 (Serovar Tennessee)

Catalog No. NR-20742

Product Description: *Salmonella enterica* (*S. enterica*) subsp. *enterica* serovar Tennessee, strain MDCH01 was isolated in January 2007 from the stool of a 58-year-old male patient in Michigan, USA.

Lot¹: 61302036

Manufacturing Date: 02NOV2012

TEST	SPECIFICATIONS	RESULTS
Phenotypic Analysis Cellular morphology Colony morphology ² Analytical profile index (API [®] 20 E) ³	Report results Report results Consistent with <i>Salmonella</i> spp.	Gram-negative rods Circular, convex, entire and cream (Figure 1) Consistent with <i>Salmonella</i> spp.
Genotypic Analysis Sequencing of 16S ribosomal RNA gene (~ 1490 base pairs) Riboprinter [®] Microbial Characterization System	Consistent with <i>S. enterica</i> Consistent with <i>S. enterica</i>	Consistent with <i>S. enterica</i> subsp. <i>enterica</i> Consistent with <i>S. enterica</i> subsp. <i>enterica</i> serovar Tennessee
Serogroup Analysis	Report results	Serogroup C ₁ ⁴
Viability (post-freeze)²	Growth	Growth

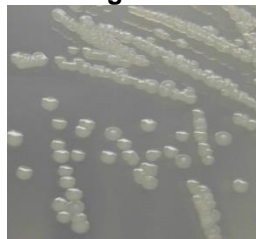
¹The deposited material was inoculated into Tryptic Soy Broth and incubated for 24 hours at 37°C in an aerobic atmosphere. Broth inoculum was added to kolles, which were incubated for 24 hours at 37°C in an aerobic atmosphere to produce this lot.

²24 hours at 37°C in an aerobic atmosphere on Tryptic Soy Agar

³Additional serological tests are required to determine *Salmonella* species using API[®] 20 E.

⁴Serogroup C₁ contains serovar Tennessee in addition to other serovars.

Figure 1



Date: 09 MAY 2013

Signature:

Title: Technical Manager, BEI Authentication or designee

ATCC[®], on behalf of BEI Resources, hereby represents and warrants that the material provided under this certificate has been subjected to the tests and procedures specified and that the results described, along with any other data provided in this certificate, are true and accurate to the best of ATCC[®]'s knowledge.

ATCC[®] is a trademark of the American Type Culture Collection.

You are authorized to use this product for research use only. It is not intended for human use.

