

**Genomic DNA from *Treponema denticola*, Strain F0402**

**Catalog No. HM-259D**

**Product Description:** Genomic DNA was obtained from a preparation of *Treponema denticola* (*T. denticola*), strain F0402.

**Lot<sup>1,2</sup>: 59980913**

**Manufacturing Date: 14SEP2012**

| TEST   | SPECIFICATIONS   | RESULTS  |
|--|--|--|
| <b>Sequencing of 16S Ribosomal RNA Gene</b><br>(~ 1430 base pairs)   | ≥ 99% identical to GenBank:<br>ADEC01000002 ( <i>T. denticola</i> ,<br>strain F0402) | ≥ 99% identical to GenBank:<br>ADEC01000002 ( <i>T. denticola</i> ,<br>strain F0402) |
| <b>Agarose Gel Electrophoresis</b>   | High molecular weight chromosomal<br>DNA   | High molecular weight chromosomal<br>DNA (Figure 1)                                  |
| <b>Concentration by PicoGreen<sup>®</sup> Measurement</b>  | 0.7 to 1.5 µg in 25 to 100 µL per vial   | 1.0 µg in 44 µL per vial (24 µg/mL)  |
| <b>Functional Activity by PCR Amplification</b><br>16S ribosomal RNA gene  | ~ 1500 bp amplicon   | ~ 1500 bp amplicon   |
| <b>OD<sub>260</sub>/OD<sub>280</sub> Ratio</b>   | 1.7 to 2.0   | 1.9  |
| <b>Bacterial Inactivation</b><br>10% of total yield inoculated in Modified New<br>Oral Spirochete (NOS) Broth <sup>3-5</sup> | No viable bacteria detected  | No viable bacteria detected  |

<sup>1</sup>Quality control of HMP organisms used for DNA extraction is only performed to demonstrate that the material produced by BEI Resources is identical to the deposited material. It should not be considered a complete characterization of the deposited organism.

<sup>2</sup>The bacterial preparation used for extraction of genomic DNA was produced by culture of the deposited material. Genomic DNA was extracted using proprietary technology.

<sup>3</sup>7 days at 37°C in an anaerobic atmosphere (85% N<sub>2</sub>:5% CO<sub>2</sub>:10% H<sub>2</sub>)

<sup>4</sup>Inoculated broth was analyzed for bacterial growth microscopically

<sup>5</sup>An extraction procedure was used that has been shown to consistently inactivate 100% of Gram-positive and Gram-negative bacteria.

**Date:** 21 MAY 2013

**Signature:**



**Title:**

Technical Manager, BEI Authentication or designee

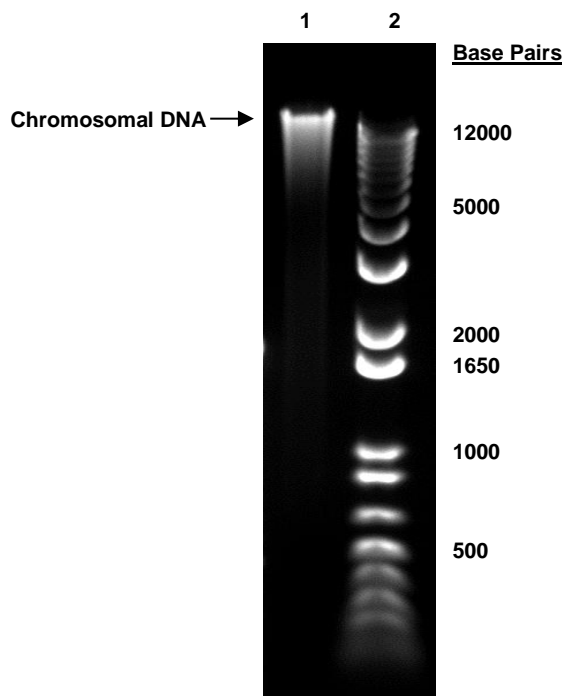
ATCC<sup>®</sup>, on behalf of BEI Resources, hereby represents and warrants that the material provided under this certificate has been subjected to the tests and procedures specified and that the results described, along with any other data provided in this certificate, are true and accurate to the best of ATCC<sup>®</sup>'s knowledge.

ATCC<sup>®</sup> is a trademark of the American Type Culture Collection.

You are authorized to use this product for research use only. It is not intended for human use.



Figure 1



Lane 1: 200 ng of HM-259D

Lane 2: Invitrogen™ TrackIt 1 Kb Plus DNA Ladder™