

Candida albicans, Strain GC75

Catalog No. NR-29452

Product Description: *Candida albicans* (*C. albicans*), strain GC75 is an oral isolate from a healthy person collected in Medunsa, South Africa. Strain GC75 is a member of genetic clade SA and has an alpha/alpha *MTL* genotype.

Lot¹: 60952561

Manufacturing Date: 21MAY2012

| TEST | SPECIFICATIONS | RESULTS |
|--|---------------------------------------|--|
| Phenotypic Analysis | | |
| Cellular morphology ² | Report results | Globose to short-ovoid, usually single or budding, occasionally forming short chains (Figure 1A) |
| Colony morphology ² | Report results | Cream-coloured, smooth, glistening, dome-shaped, often becoming wrinkled with a mycelia border (Figure 1B) |
| CHROMagar Candida Testing ³ | Green colonies (<i>C. albicans</i>) | Green colonies (<i>C. albicans</i>) |
| Biochemical tests: Vitek 2 Systems Version: 05.01 (YST card) | Consistent with <i>C. albicans</i> | Consistent with <i>C. albicans</i> |
| Genotypic Analysis | | |
| Sequencing of partial 18S rRNA gene, internal transcribed spacer (ITS) 1, 5.8S rRNA gene, ITS 2, partial 28S rRNA (~ 550 base pairs) | Consistent with <i>C. albicans</i> | Consistent with <i>C. albicans</i> |
| Sequencing of 26S rRNA gene (~ 620 base pairs) | Consistent with <i>C. albicans</i> | Consistent with <i>C. albicans</i> ⁴ |
| Purity (7 days)⁵ | | |
| Nutrient Broth with 0.1% Yeast Extract at 25°C | No bacterial growth | No bacterial growth |
| Nutrient Broth with 0.1% Yeast Extract at 37°C | No bacterial growth | No bacterial growth |
| Viability (post-freeze)² | Growth | Growth |

¹The deposited material was inoculated into Yeast Mold (YM) broth and incubated for 3 days at 25°C and aerobic atmosphere to produce this lot.

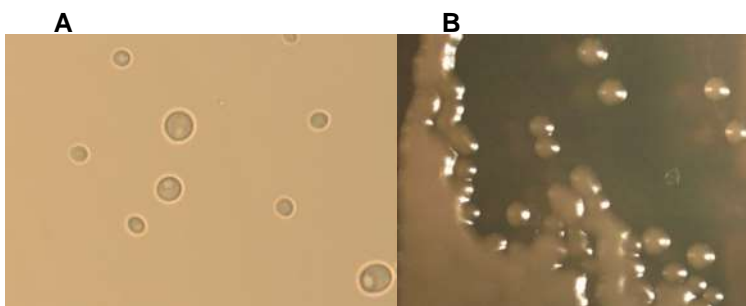
²4 days at 25°C and aerobic atmosphere on YM agar

³CHROMagar displays high sensitivity and specificity for three of the major *Candida* species (Odds, F. C., and R. Bernarts. "CHROMagar Candida, a New Differential Isolation Medium for the Presumptive Identification of Clinically Important *Candida* species." *J. Clin. Microbiol.* 32 (1994): 1923-1929. PubMed: 7989544).

⁴Also consistent with *C. africana*

⁵Clarity of broth was determined by visual inspection.

Figure 1



Date: 24 JAN 2013

Signature:



Title: Technical Manager, BEI Authentication or designee

ATCC[®], on behalf of BEI Resources, hereby represents and warrants that the material provided under this certificate has been subjected to the tests and procedures specified and that the results described, along with any other data provided in this certificate, are true and accurate to the best of ATCC[®]'s knowledge.

ATCC[®] is a trademark of the American Type Culture Collection.

You are authorized to use this product for research use only. It is not intended for human use.

